



## 6.88" 480×1280 TFT LCD Touch Screen Module , Fast 30ms Response , Wide Temperature Operation

### Our Product Introduction

#### Basic Information

- Place of Origin: Shenzhen, China
- Brand Name: RGH
- Certification: ISO9001/ISO14001
- Model Number: RTP686006A
- Minimum Order Quantity: 3PCS
- Price: negotiable
- Packaging Details: standard package
- Delivery Time: 3-5 weeks
- Payment Terms: L/C, T/T
- Supply Ability: 3.5KK

» RT686006A

**6.8 INCH**  
**480\*1280**

LCD TFT DISPLAY  
SUPPORT CUSTOMIZATION

- QUALITY ASSURANCE
- ONE YEAR WARRANTY
- FACTORY DIRECT SALES

WWW.DISPLAYTFTLCD.COM

#### Product Specification

- Size: 6.8 inch
- Resolution: 480 RGB X 1280
- Viewing Direction: ALL O'clock
- LCM Outline Dimension: 78.7 (H) X 189.6 (V) X 7.5 (T) Mm
- Active Area: 60.22 (H) X 160.59 (V)
- Number Of Pins: 30 Pins
- Product Type: Tft
- Operating Temperature: -20 ~ 85
- Storage Temperature: -30 ~ 85
- Driving IC: FL7705
- TP IC: GA6571
- Response Time: 30ms
- Contrast Ratio: 900:1
- Luminance: 650cd/m2
- Highlight: 6.88 inch TFT LCD touch screen.

for more products please visit us on [displaytftlcd.com](http://displaytftlcd.com)

## Product Description

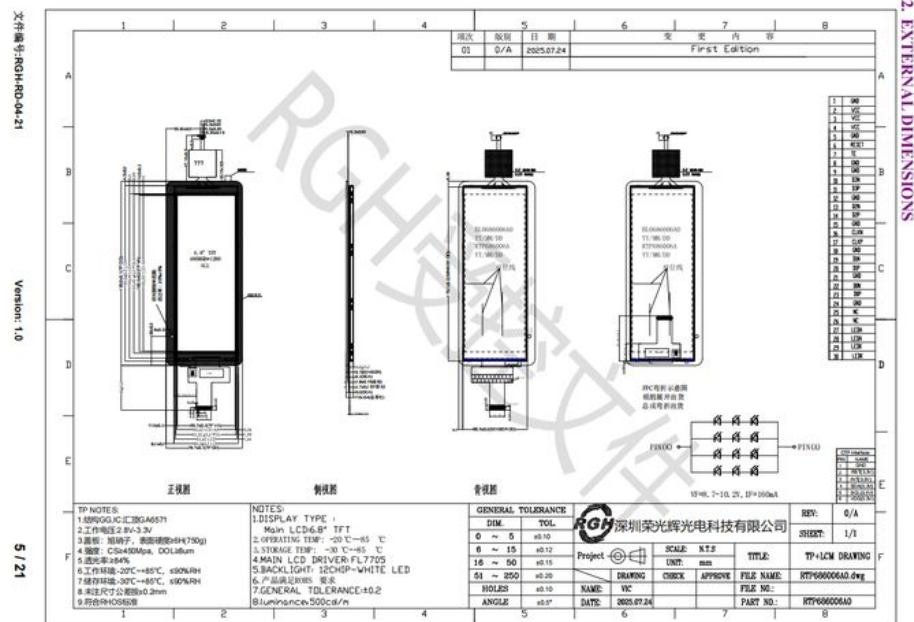
### Product Features

6.88-inch TFT LCD with 480 (RGB) × 1280 resolution for sharp and detailed visuals  
High brightness of 650 cd/m<sup>2</sup> and 900:1 contrast ratio for excellent visibility in various lighting conditions  
Wide viewing angles (ALL o'clock) ensuring clear display from any direction  
Fast 30 ms response time for smooth image transitions  
Integrated capacitive touch panel (TP IC: GA6571) for accurate and responsive touch control  
Wide operating temperature range from -20 to 85 , suitable for harsh environments  
Compact outline (78.7 × 189.6 × 7.5 mm) with 30-pin interface for easy integration

### Product Applications

Smart home control panels and wall-mounted control terminals  
Handheld industrial devices and portable measuring instruments  
Automotive dashboard or rear-seat entertainment displays  
Medical monitoring and portable diagnostic equipment  
Consumer electronics such as smart appliances and multimedia players

NO.	Symbol	Level	Function
1	GND		Ground
2-4	VCC		Power setting
5	GND		Ground
6	RESET		The external reset input
7	TE		TE-PIN
8	GND		Ground
9	GND		Ground
10	D3N		MIPI Data pin Positive
11	D3P		MIPI Data pin Positive
12	GND		Ground
13	D2N		MIPI Data pin Positive
14	D2P		MIPI Data pin Positive
15	GND		Ground
16	CLKN		MIPI clock signal
17	CLKP		MIPI clock signal
18	GND		Ground
19	D1N		MIPI Data pin Positive
20	D1P		MIPI Data pin Positive
21	GND		Ground
22	D0N		MIPI Data pin Positive
23	D0P		MIPI Data pin Positive
24	GND		Ground
25	NC		NC
26	NC		NC
27	LEDA		LED power anode
28	LEDA		LED power anode
29	LEDK		LED power cathode
30	LEDK		LED power cathode



This 6.8-inch 480×1280 TFT LCD module integrates a highly responsive capacitive touch panel, delivering smooth and accurate multi-touch performance. With its high brightness, wide viewing angles, and reliable operation under extreme temperatures, this display is an ideal choice for interactive smart devices, industrial handheld terminals, and other applications requiring precise touch control and vivid visual output.



**Rongguang Hui Optoelectronics Science and Technology**



+8613924639701



allan@rgh-display.com



displaytftlcd.com

Meilan Business Center 2001, at the intersection of Xixiang Avenue and Qianjin 2nd Road , Xixiang Street ,  
Bao'an District , Shenzhen City