



## 1.52" High Brightness TFT LCD Module 360x360 Resolution , 1300:1 Contrast , All-Angle Viewing

### Our Product Introduction

#### Basic Information

- Place of Origin: Shenzhen, China
- Brand Name: RGH
- Certification: ISO9001/ISO14001
- Model Number: RT152006A
- Minimum Order Quantity: 3PCS
- Price: negotiable
- Packaging Details: standard package
- Delivery Time: 3-5 weeks
- Payment Terms: L/C, T/T
- Supply Ability: 3.5KK



#### Product Specification

- Size: 1.52 inch
- Resolution: 360 RGB X 360
- Pin Number: 16 Pins
- Viewing Direction: ALL O'clock
- Cover Glass Dimension: Customizable
- LCM Outline Dimension: 40.08 (H) X41.97(V) X1.58(T) Mm
- Control Driver: ST77916
- Viewing Area: 38.58(H) X38.58(V)
- Operating Temperature: -10 ~60
- Storage Temperature: -20 ~70
- LCD Type: Transmissive TFT
- Response Time: 35ms
- Contrast Ratio: 1300:1
- Luminance: 580cd/m2

for more products please visit us on [displayftltd.com](http://displayftltd.com)

## Product Description

### Product Features

**1.52-inch** transmissive TFT LCD with a resolution of **360(RGB) × 360** for clear and crisp images.

Compact module size **40.08(H) × 41.97(V) × 1.58(T) mm** with active viewing area **38.58(H) × 38.58(V) mm**.

High brightness **580 cd/m<sup>2</sup>** for excellent visibility in various lighting conditions.

High contrast ratio **1300:1** for sharp image quality and vibrant colors.

**All o'clock** wide viewing angles for consistent display performance from any direction.

**Customizable cover glass** to match different application needs.

Powered by **ST77916** driver IC, ensuring stable and reliable operation.

Fast response time **35 ms** for smooth visual transitions.

Operating temperature range **-10°C to +60°C**, storage temperature **-20°C to +70°C** for versatile environments.

### Applications

Wearable smart devices.

Smart home control panels.

Handheld and portable equipment.

Medical monitoring devices.

Consumer electronics with compact display requirements.

Industrial control instruments.

# Applicable in Multiple Fields

*Diverse Needs · Multiple Industries · We've Got You Covered*

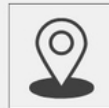
Our product is widely used in various sectors including industrial automation, automotive electronics, home appliances, medical equipment, telecommunications, and specialized applications.



POS  
MACHINE



SMART  
PHONE



VEHICLE  
NAVIGATION



CHARGING  
STATIONS



MEDICAL  
EQUIPMENT



PRINTER



GAMING  
CONSOLES



SMART  
WEARABLES

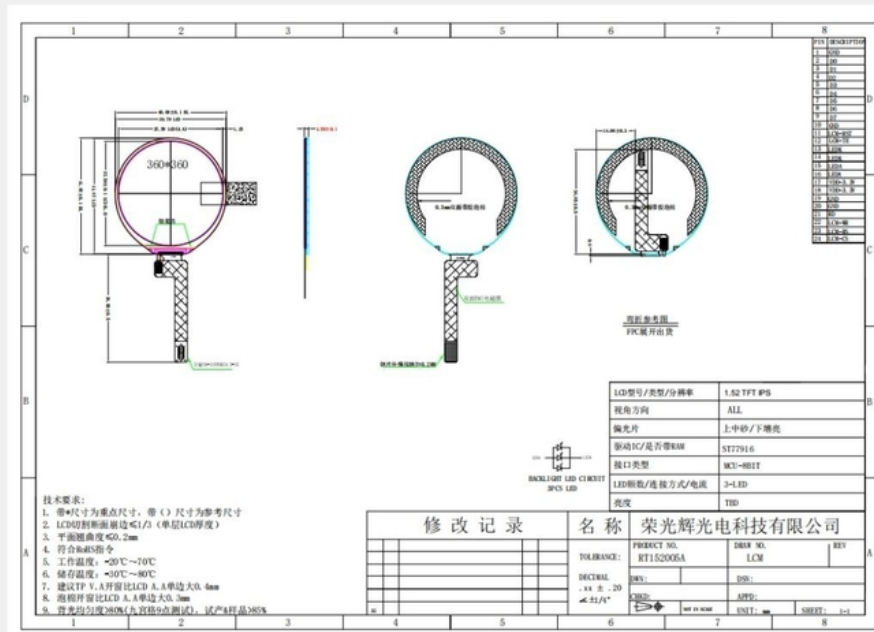


FACE  
RECOGNITION  
DEVICES



MEDICAL  
EQUIPMENT

# Product Size



# Interface Definition

## 2. Pin Assignments 接口定义

No.Pin 序号	Symbol 符 号	Function 功能描述
1	GND	Ground(0V)
2-9	D0-D7	data bus.
10	GND	Ground(0V)
11	RESET	This signal will reset the device and it must be applied to properly
12	TE	Tearing effect signal is used to synchronize MCU to frame memory
13-14	LEDK	LED, cathode.
15-16	LEDA	LED, anode.
17-18	VDD	Power supply.
19-20	GND	Ground(0V)
21	RD	-Read enable in 8080 MCU parallel interface.
22	WR	-Write enable in MCU parallel interface.
23	RS	-Display data/command selection pin in parallel interface.
24	CS	-Chip selection pin

This 1.52-inch square TFT LCD display features a 360×360 high-resolution panel with all-angle viewing capability, delivering vivid and sharp visuals from any direction. With a high brightness of 580 cd/m<sup>2</sup> and a contrast ratio of 1300:1, it ensures excellent visibility even in bright environments. The module adopts a transmissive display mode and is driven by the ST77916 controller, offering stable performance and fast response. Designed to operate in wide temperature ranges, it is highly reliable for use in various environments.

Its compact size and customizable cover glass make it an ideal display solution for smart wearable devices, handheld instruments, medical monitoring equipment, industrial terminals, and other compact consumer electronics requiring clear and vibrant color displays.



+8613924639701



allan@rgh-display.com



displayttlcd.com

Meilan Business Center 2001, at the intersection of Xixiang Avenue and Qianjin 2nd Road , Xixiang Street ,  
Bao'an District , Shenzhen City