

7.0 Inch TFT LCD Display Module – High Brightness , Wide Viewing Angle

Our Product Introduction

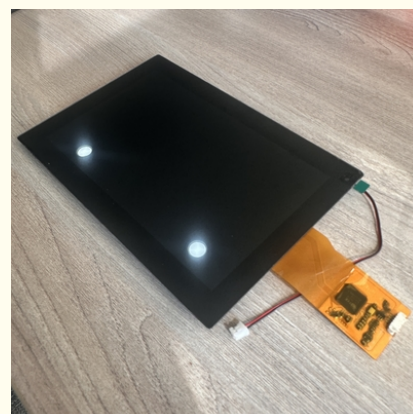
Basic Information

- Place of Origin: Shenzhen, China
- Brand Name: RGH
- Certification: ISO9001/ISO14001
- Model Number: RT70FHD003A
- Minimum Order Quantity: 3PCS
- Price: negotiable
- Packaging Details: standard package
- Delivery Time: 3-5 weeks
- Payment Terms: L/C, T/T
- Supply Ability: 3.5KK



Product Specification

- Size: 7.0 inch
- Display Resolution: 1200*3(RGB)*1920
- LCD Mode: A-Si TFT/transmissive
- Outline Dimension: 111.0(H) * 166.0(V) * 3.29(T) Mm
- Active Area: 94.5*(H) * 151.2*(V) Mm
- Pixel Arrangement: RGB-stripe
- Viewing Direction: 80/80/80/80
- Display Mode: Normally Black
- IC Package Type: COG
- Surface Treatment: Hard Coating
- Interface: MIPI
- Response Time: 30ms
- Highlight: 7.0 inch TFT LCD display module, high brightness TFT LCD, wide viewing angle LCD display



More Images



Product Description

7.0 Inch TFT LCD Display Module – High Brightness, Wide Viewing Angle

This 7.0-inch TFT LCD display offers exceptional visual clarity with a resolution of 1024x600 pixels, making it ideal for embedded systems, industrial equipment, and medical devices. With its high brightness of 1000 nits and wide 170° viewing angle, the display ensures clear visibility even under direct sunlight.

Key Features:

Display Size: 7.0 inches
 Resolution: 1024 x 600
 Brightness: 1000 cd/m²
 Contrast Ratio: 800:1
 Interface: RGB/HDMI/LVDS optional
 Operating Temperature: -20°C to +70°C
 Optional Capacitive/Resistive Touchscreen

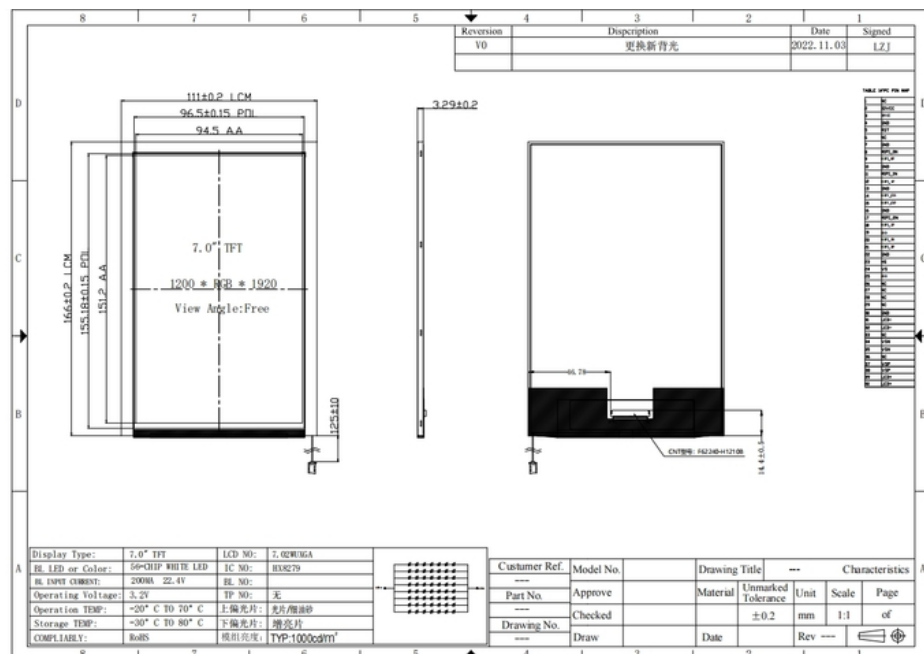
Designed for long-term use, the module supports high durability, low power consumption, and stable performance across various environments.

Applications:

Industrial automation control panels
 Medical diagnostic equipment
 Smart home systems
 POS terminals & kiosks

Customizations such as touchscreen integration, interface changes, and mechanical design are available upon request. OEM/ODM support provided.

Size	0.96 inches
Resolution	128*64
Viewing Angle	12 O'CLOCK
Interface	SPI
Driving IC	ST7735S
Response time	35ms
Operating temperature	-20 ~70
Storage temperature	-30 ~80



Meilan Business Center 2001, at the intersection of Xixiang Avenue and Qianjin 2nd Road , Xixiang Street ,
Bao'an District , Shenzhen City