

6.9" TFT LCD Display Module, 280x1424 Resolution, ST7703I-G5-DP Driver, High Contrast 1200:1, Wide Temperature Range

Basic Information

- Place of Origin: Shenzhen, China
- Brand Name: RGH
- Certification: ISO9001/ISO14001
- Model Number: RTP69HD001A
- Minimum Order Quantity: 3PICS
- Price: negotiable
- Packaging Details: standard package
- Delivery Time: 3-5 weeks
- Payment Terms: L/C, T/T
- Supply Ability: 3.5KK

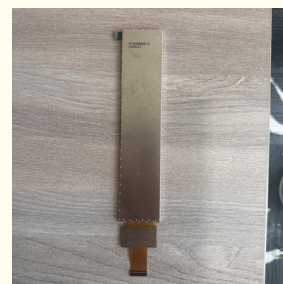
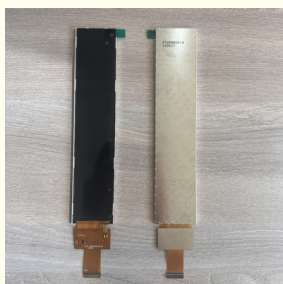


Product Specification

- Size: 6.9 inch
- Resolution: 280 RGB X 1424
- Viewing Direction: ALL O'clock
- LCM Outline Dimension: 47.20 (H) X 195.88 (V) X 5.50 (T) Mm
- Number Of Dots: 280 RGB X 1424
- Active Area: 33.60 (H) X 170.88 (V)
- Display Mode: Transmissive TFT
- Operating Temperature: 20 ~ 70
- Storage Temperature: -30 ~ 80
- Driving IC: ST7703I-G5-DP
- Response Time: 35ms
- Contrast Ratio: 1200:1



More Images





NEW

TFT LCD DISPLAY

BY RONGGUANGHUI



OUR COMPANY FOCUSES ON THE R&D, PRODUCTION,
AND SALES OF LCD DISPLAY MODULES (LCM) AND
TOUCH DISPLAYS.

OUR PRODUCT RELIABILITY TESTING



High
Temperature &
Humidity



Electrostatic
Discharge (ESD)



Corrosion
Resistance



Vibration
Resistance



Salt Spray Test



High Temperature
Aging

RONGGUANGHUI OPTOELECTRONICS

Craftsmanship Spirit | Dedicated Work

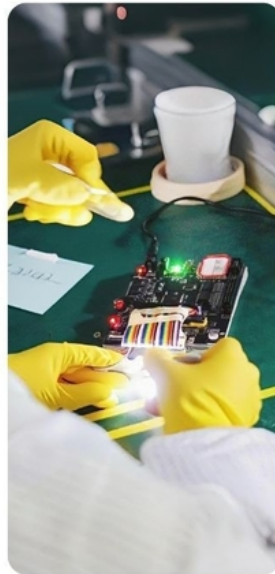


We focus on only three things



Direct from Factory

Committed to
simplicity and
practicality



Craftsmanship Spirit

Every product is
made with care
and precision



Excellent Pre- and After-Sales Service

Friendly and
professional
customer support

Integrated Plastic-Metal Backlight

- Energy-saving with excellent uniformity
- Low power consumption
- Anti-static
- Anti-interference
- High-temperature resistant



02

**Excellent Driver
Compatibility**
Supports Various
Interfaces



Gold Fingers with Nickel-Gold Plating for Oxidation Resistance

Resistant to Salt Spray, Corrosion, and
Extreme Temperatures



PRODUCT SPECIFICATIONS

Product Parameter Information

Size: 6.9"	Resolution: 280(RGB)*1424
Interface: MIPI	Active Area: 33.60(H) × 170.88(V)
Luminance: 300cd/m2	Driver IC: ST7703I-G5-DP
Viewing Direction: ALL	Model: RT69HD001A
Outline Dimension: 47.20(H)x195.88(V)x5.50(T)	Operating Temp: -20° to 70°
Backlight: 8 WHITE LEDs	Storage Temp: -30° to 80°

CERTIFICATES DISPLAY



Applicable in Multiple Fields

Diverse Needs · Multiple Industries · We've Got You Covered

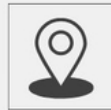
Our product is widely used in various sectors including industrial automation, automotive electronics, home appliances, medical equipment, telecommunications, and specialized applications.



POS
MACHINE



SMART
PHONE



VEHICLE
NAVIGATION



CHARGING
STATIONS



MEDICAL
EQUIPMENT



PRINTER



GAMING
CONSOLES



SMART
WEARABLES

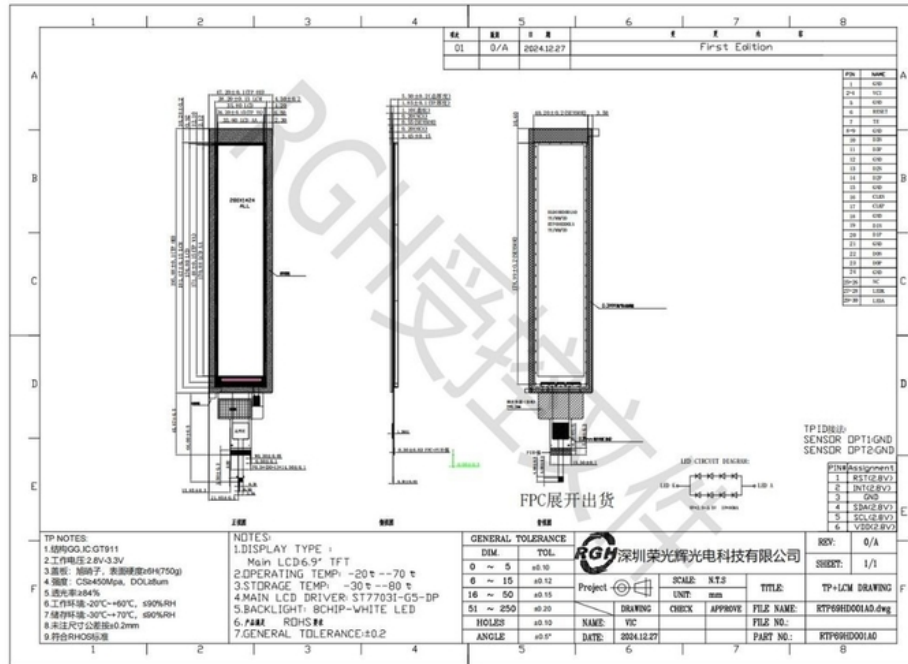


FACE
RECOGNITION
DEVICES



MEDICAL
EQUIPMENT

Product Size



Interface Definition

Interface type: MIPI

NO.	Symbol	Level	Function
1	GND		Ground
2-4	VCI		Power supply for analog circuit.
5	GND		Ground
6	RESET		Reset pin
7	TE		TE PIN
8-9	GND		Ground
10	D3N		MIPI Data pin Positive
11	D3P		MIPI Data pin Positive
12	GND		Ground
13	D2N		MIPI Data pin Positive
14	D2P		MIPI Data pin Positive
15	GND		Ground
16	CLKN		Mipi clock signal
17	CLKP		Mipi clock signal
18	GND		Ground
19	D1N		MIPI Data pin Positive
20	D1P		MIPI Data pin Positive
21	GND		Ground
22	D0N		MIPI Data pin Positive
23	D0P		MIPI Data pin Positive
24	GND		Ground
25-26	NC		NC
27-28	LEDK		LED power cathode
29-30	LEDA		LED power anode

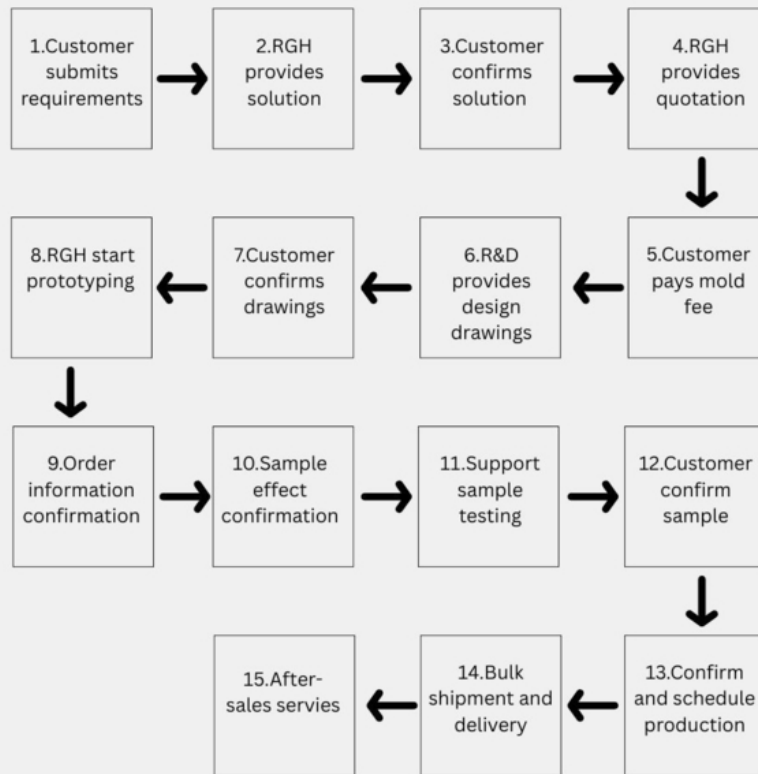
Production Workshop Display

Diverse Needs · Multiple Fields · We've Got You Covered





Customization Process



Our Clients

"Trusted by Clients, Chosen for Excellence"

FELLOW

PHILIPS



PAPAGO!

Union
联合光电

Pioneer



May young
PROFESSIONAL HAIR TOOL

Kindly Reminder

01 Warm Tips

Due to high product circulation, occasional stock shortages may occur. Before confirming your purchase, please contact the shop owner to check availability. Generally, products are in stock, but if there is a shortage, we will notify you promptly so you can choose to wait, exchange, or request a refund. This helps avoid unnecessary misunderstandings.

All product images are real shots. However, due to lighting, angles, display differences, and other factors, there may be slight color variations. Please refer to the actual product. Thank you for your understanding!

02 Delivery Information

To avoid unnecessary delays and issues, please fill in the correct shipping address, contact number, and contact person, and keep your phone accessible so we can reach you promptly if needed.

03 About Delivery

When receiving your package, please check in front of the courier whether the outer packaging is intact and undamaged. After confirming there are no issues, sign for the parcel. If there are any problems such as missing items, wrong quantities, or damage, please contact us immediately before signing.

As delivery service quality may vary in different regions, unexpected issues may arise. If you encounter any dissatisfaction, please let us know. We will do our best to assist and provide a satisfactory solution. Thank you!



Rongguang Hui Optoelectronics Science and Technology



+8613924639701



allan@rgh-display.com



displaytftlcd.com

Meilan Business Center 2001, at the intersection of Xixiang Avenue and Qianjin 2nd Road, Xixiang Street, Bao'an District, Shenzhen City