

## 3.9" TFT LCD Module 800×220 With ST72568 Driver, 10-LED Backlight, Customizable Cover Glass

### Our Product Introduction

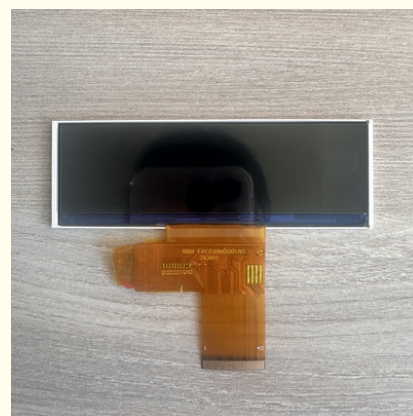
#### Basic Information

- Place of Origin: Shenzhen, China
- Brand Name: RGH
- Certification: ISO9001/ISO14001
- Model Number: RT39HD001A
- Minimum Order Quantity: 3PICS
- Price: negotiable
- Packaging Details: standard package
- Delivery Time: 3-5 weeks
- Payment Terms: L/C, T/T
- Supply Ability: 3.5KK

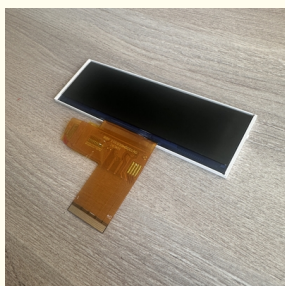


#### Product Specification

- Size: 3.9inch
- Resolution: 800 RGB X 220
- Viewing Direction: ALL O'clock
- LCM Outline Dimension: 103.20 (H) X34.85(V) X2.50(T) Mm
- Viewing Area: 96.04(H) X25.68(V)
- Active Area: 95.04(H) X24.68(V)
- Storage Temperatures: -30 ~80
- Operating Temperature: -20 ~70
- Back Light: 10 LEDs
- Lifetime: 35,000 Hours
- Cover Glass Dimension: Customizable
- Driving IC: ST72568
- Luminance: 300cd/m2
- Warranty: 1 Year



#### More Images





NEW

# TFT LCD DISPLAY

BY RONGGUANGHUI



OUR COMPANY FOCUSES ON THE R&D, PRODUCTION,  
AND SALES OF LCD DISPLAY MODULES (LCM) AND  
TOUCH DISPLAYS.

# OUR PRODUCT RELIABILITY TESTING



High  
Temperature &  
Humidity



Electrostatic  
Discharge (ESD)



Corrosion  
Resistance



Vibration  
Resistance



Salt Spray Test



High Temperature  
Aging

# RONGGUANGHUI OPTOELECTRONICS

Craftsmanship Spirit | Dedicated Work

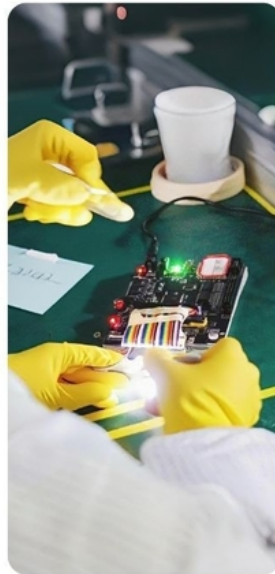


*We focus on only three things*



## **Direct from Factory**

Committed to  
simplicity and  
practicality



## **Craftsmanship Spirit**

Every product is  
made with care  
and precision



## **Excellent Pre- and After-Sales Service**

Friendly and  
professional  
customer support

## Integrated Plastic-Metal Backlight

- Energy-saving with excellent uniformity
- Low power consumption
- Anti-static
- Anti-interference
- High-temperature resistant



02

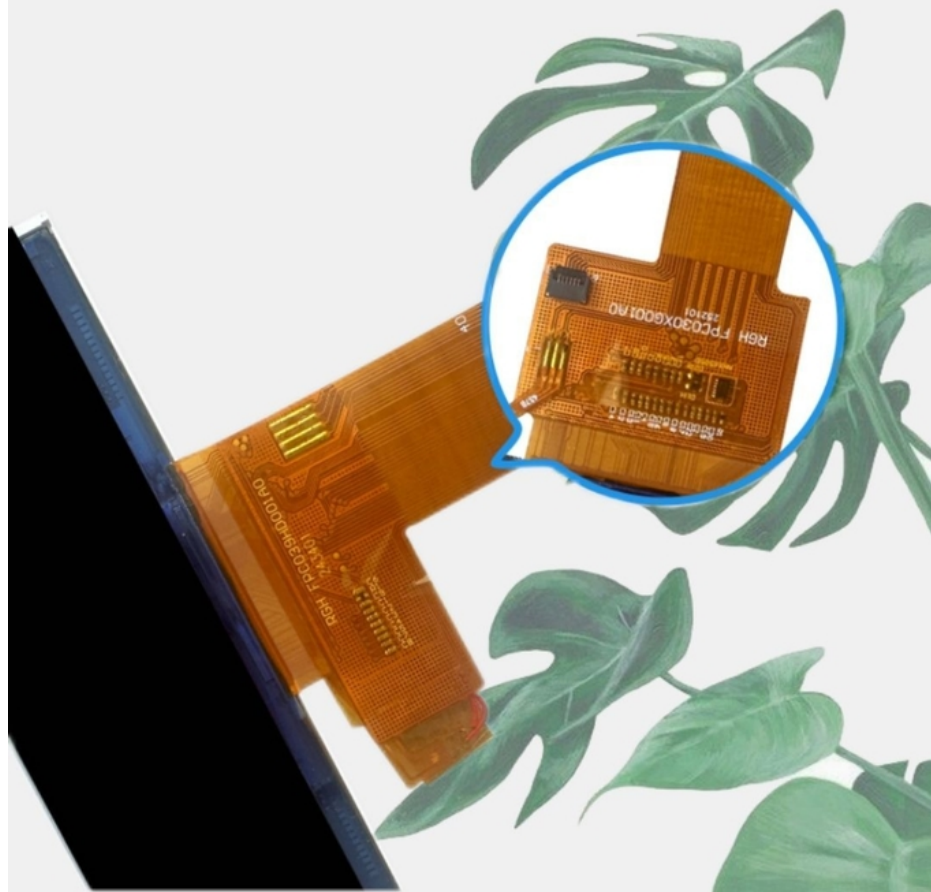
**Excellent Driver  
Compatibility**  
Supports Various  
Interfaces





### **Gold Fingers with Nickel-Gold Plating for Oxidation Resistance**

Resistant to Salt Spray, Corrosion, and  
Extreme Temperatures



# PRODUCT SPECIFICATIONS

## Product Parameter Information

Size: 3.9"	Resolution: 800(RGB)*220
Interface: RGB	Active Area: 95.04(H) × 24.68(V)
Luminance: 300cd/m2	Driver IC: ST72568
Viewing Direction: ALL	Model: RT39HD001A
Outline Dimension: 103.20(H)x34.85(V)x2.40(T)	Operating Temp: -20° to 70°
Backlight: 10 LEDs	Storage Temp: -30° to 80°

# CERTIFICATES DISPLAY





# Applicable in Multiple Fields

*Diverse Needs · Multiple Industries · We've Got You Covered*

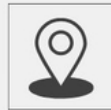
Our product is widely used in various sectors including industrial automation, automotive electronics, home appliances, medical equipment, telecommunications, and specialized applications.



POS  
MACHINE



SMART  
PHONE



VEHICLE  
NAVIGATION



CHARGING  
STATIONS



MEDICAL  
EQUIPMENT



PRINTER



GAMING  
CONSOLES



SMART  
WEARABLES

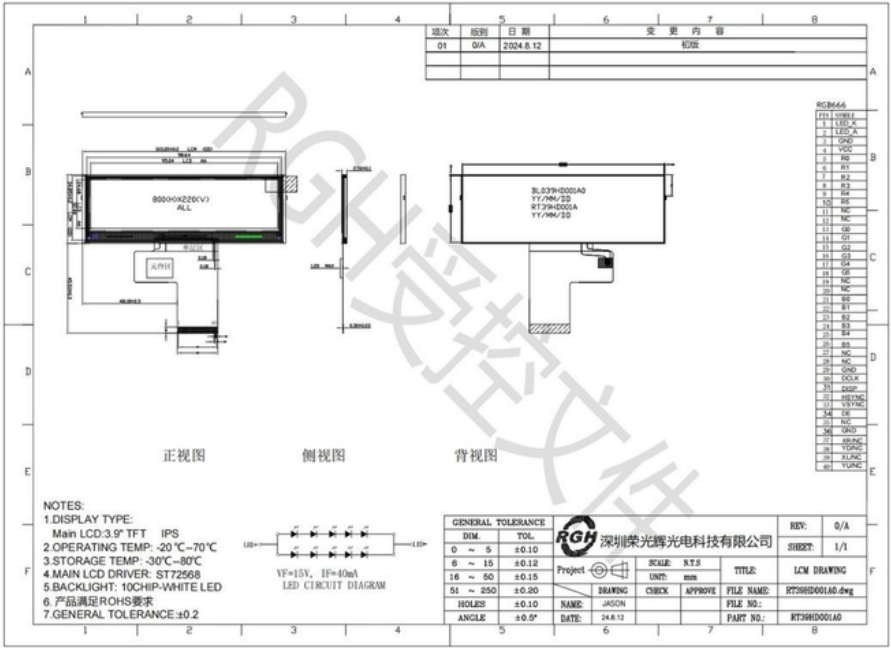


FACE  
RECOGNITION  
DEVICES



MEDICAL  
EQUIPMENT

Product Size



Interface Definition

Interface type: RGB

NO.	Symbol	Level	Function
1	LEDK		LED power cathode
2	LEDA		LED power anode
3	GND		Ground
4	VCC		Power setting
5-10	R0-R5		Red data
11-12	NC		NC
13-18	G0-G5		Green data
19-20	NC		NC
21-26	B0-B5		Blue data
27-28	NC		NC
29	GND		Ground
30	DCLK		DCLKN is not used in RGB interface and should be connected to "L"
31	DISP		DISP sets the display mode
32	HS		Horizontal sync signal applied to the RGB interface.
33	VS		Vertical sync signal applied to the RGB interface
34	DE		Data input enable applied to the RGB interface
35	NC		NC
36	GND		Ground
37	XR/NC		NC
38	YD/NC		NC
39	XL/NC		NC
40	YU/NC		NC

# Production Workshop Display

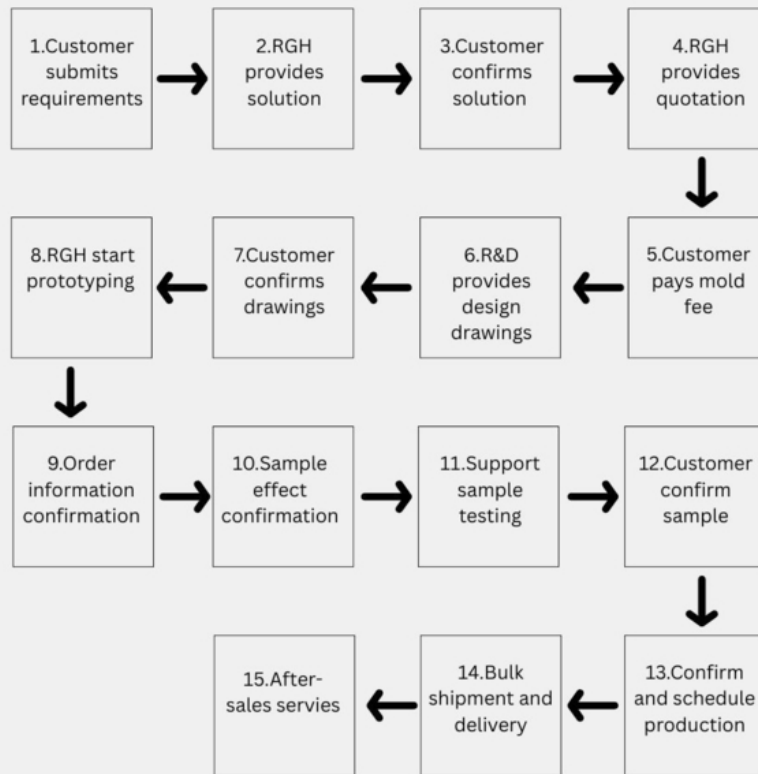
*Diverse Needs · Multiple Fields · We've Got You Covered*







# Customization Process



**Rongguang Hui Optoelectronics Science and Technology**



+8613924639701



allan@rgh-display.com



displayttlcd.com

Meilan Business Center 2001, at the intersection of Xixiang Avenue and Qianjin 2nd Road , Xixiang Street ,  
Bao'an District , Shenzhen City