



## 1.52-Inch 360×360 Transmissive TFT Display Module with LED Backlight

### Our Product Introduction

#### Basic Information

- Place of Origin: Shenzhen, China
- Brand Name: RGH
- Certification: ISO9001/ISO14001
- Model Number: RT152005B
- Minimum Order Quantity: 3pcs
- Price: Negotiable
- Packaging Details: Standard Exportation Package
- Delivery Time: 3-5 weeks
- Payment Terms: L/C, T/T, Paypal
- Supply Ability: 3.5kk



#### Product Specification

- Size: 1.52 inch
- Resolution: 360 RGB X360
- LCD Type: Transmissive TFT
- Viewing Direction: ALL O'clock
- LCM Outline Dimension: 40.08(H)\*41.97\*1.58(T)
- Active Area: 37.58(H) X37.58(V) Mm
- Backlight Type: LED
- Operating Temperature: -10 ~60
- Storage Temperature: -20 ~70
- Driving IC: ST77916
- Brightness: 580cd/m2
- Color: 262k
- Highlight: 1.52-inch circular TFT display, 360×360 transmissive LCD module, LED backlight display with warranty



#### More Images

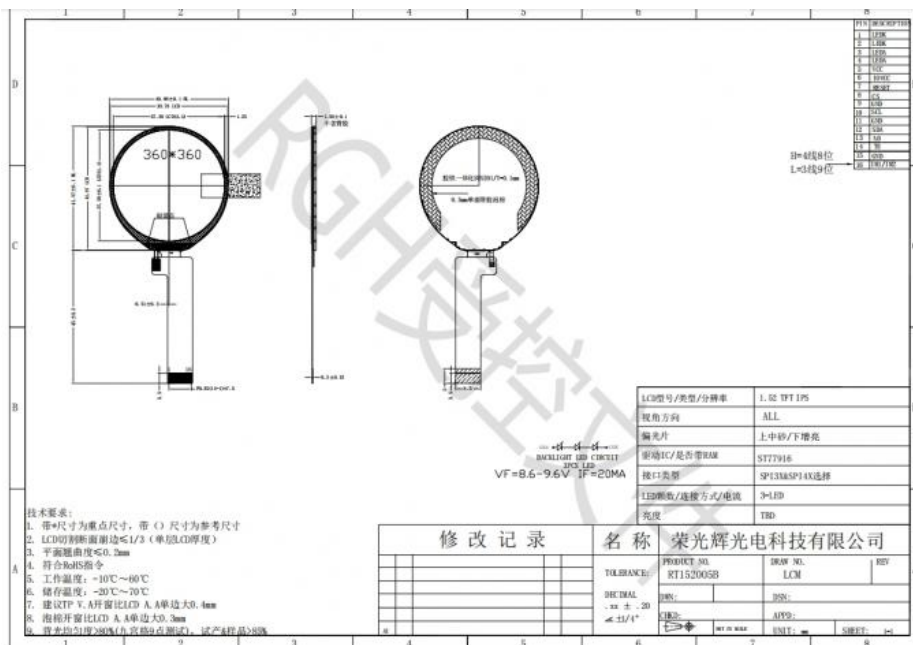


## Our Product Introduction

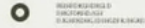
for more products please visit us on [displaytftlcd.com](http://displaytftlcd.com)

## Interface Pin Definition

### External Dimensions



# IT IS USED IN A VARIETY OF FIELDS



THIS PRODUCT CAN BE WIDELY USED IN INDUSTRY, ELECTRIC  
HAND SELF-INTEGRATED  
AUTOMOTIVE ELECTRONICS, HOME APPLIANCES,  
MEDICAL EQUIPMENT, COMMUNICATIONS AND MANY OTHER FIELDS



CAR NAVIGATION



CHARGING PILES



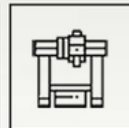
POS MACHINES



SMART HOME  
APPLIANCES



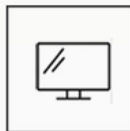
MEDICAL  
EQUIPMENT



GAS DETECTORS



PRINTER



BEAUTY EQUIPMENT



GAME



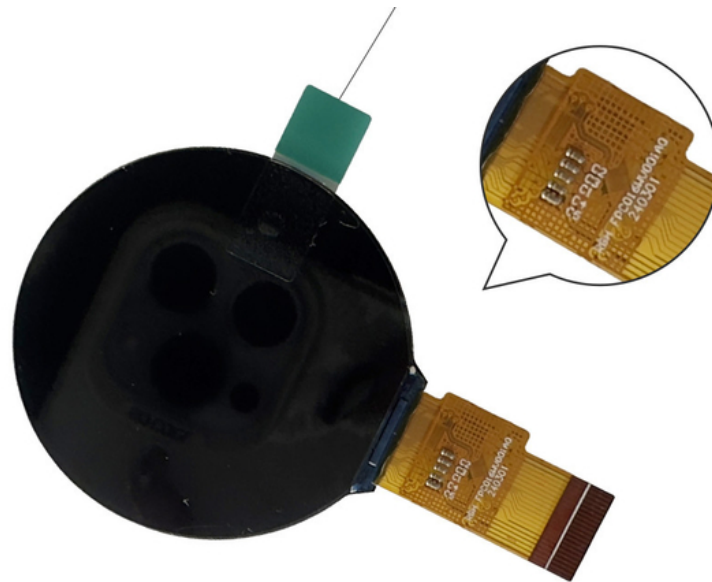
SMART  
WEARABLES



FACIAL  
RECOGNITION DEVICES



MANAGE HANDHELD  
TERMINALS



## FAQ

1: What are the payment terms?

A: We usually accept T/T, Paypal, other terms to be negotiated.

2: What's the lead time?

A: Usually 3~5 days for sample orders if goods are in stock, and 3~5 weeks for mass production (basing on the quantity and product).

3: Do you support custom logo on the LCM?

A: Yes, we support, pls send us your detail inquiry, our sales will contact you asap.

4: How can I place a sample order?

A: Pls send us your inquiry, our sales will contact you soon.

5: What size LCD display can you provide?

A: 0.96 inch to 21.5 inch TFT LCD display we can provide.

6: What's your MOQ?

A: Most of our product's MOQ is 1K, beacuse we are a LCD display manufacturer.

7. What shipping ways do you support?

A: We can consult with it.



**Rongguang Hui Optoelectronics Science and Technology**



+8613924639701



allan@rgh-display.com



displaytftlcd.com

Meilan Business Center 2001, at the intersection of Xixiang Avenue and Qianjin 2nd Road , Xixiang Street ,  
Bao'an District , Shenzhen City