



1.3inch IPS TFT 380cd/M2 Brightness ALL o'clock viewing angle Circular Touch Lcd Display

Our Product Introduction

Basic Information

- Place of Origin: Shenzhen, China
- Brand Name: RGH
- Certification: ISO9001/ISO14001
- Model Number: RTP13QV041A
- Minimum Order Quantity: 3pcs
- Price: Negotiable
- Packaging Details: Standard Exportation Package
- Delivery Time: 3-5 weeks
- Payment Terms: L/C, T/T, Paypal
- Supply Ability: 3.5kk

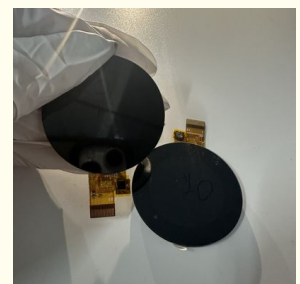
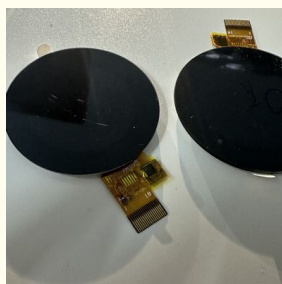


Product Specification

- Size: 1.3 inch
- Resolution: 240 RGB X240
- LCD Type: Transmissive TFT
- Viewing Direction: ALL O'clock
- LCM Outline Dimension: 47.3(W) X 47.3(H) X3.05(T) Mm
- Active Area: 32.4(W) X32.4(H) Mm
- Backlight Type: LED
- Operating Temperature: -20 ~70
- Storage Temperature: -30 ~80
- Driving IC: GC9A01
- Brightness: 380cd/m2
- CTP IC: CHSC6413
- Response Time: 35ms
- Contrast Ratio: 1100:1



More Images



Product Description

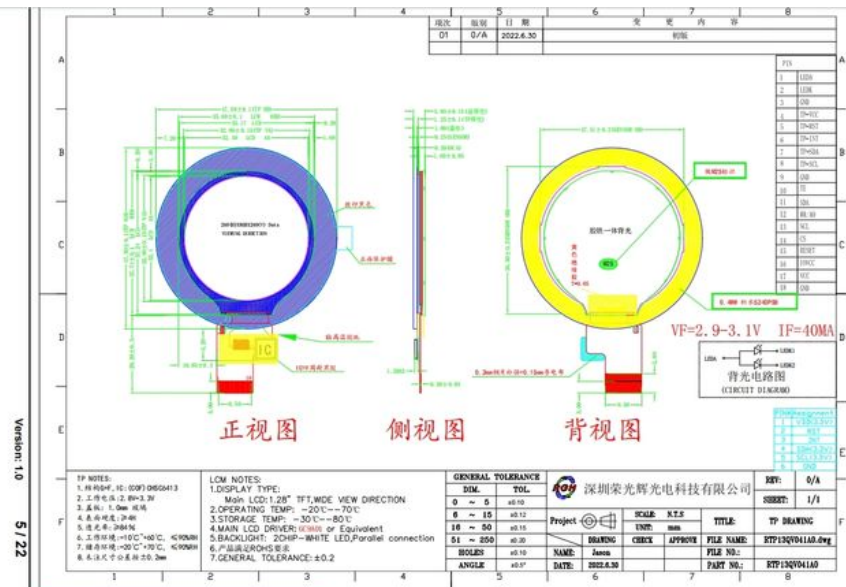
Product Specification

Size	1.3inch
Resolution	240(RGB)X240
Backlight Type	LED
LCD Type	Transmissive TFT
Driving IC	GC9A01
Brightness	380cd/m2
Operating temperature	-20 ~70
Active Area	32.4(W) X32.4(H) mm

Interface Pin Definition

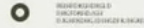
NO.	Symbol	Level	Function
1	LEDA		LED,anode.
2	LEDK		LED,cathode.
3	GND		Ground
4	TP-VCC		Power setting
5	TP-RESET		TP RESET PIN
6	TP-INT		TP INT
7	TP-SDA		TP SDA
8	TP-SCL		TP SCL
9	GND		Ground
10	TE		TE
11	SDA		SPI interface input/output pin.
12	WRIO0		command selection pin in 4-line serial interface
13	SCL		This pin is used to be serial interface clock
14	CS		-Chip selection pin
15	RESET		Reset signal.
16	IOVCC	1.8V	Power supply for digital interface
17	VDD	2.8V(typ)	Power supply.
18	GND		Ground

External Dimensions



EXTERNAL DIMENSIONS

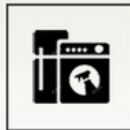
IT IS USED IN A VARIETY OF FIELDS



THIS PRODUCT CAN BE WIDELY USED IN INDUSTRY, ELECTRIC
HAND SELF-INTEGRATED
AUTOMOTIVE ELECTRONICS, HOME APPLIANCES,
MEDICAL EQUIPMENT, COMMUNICATIONS AND MANY OTHER FIELDS



CAR NAVIGATION



CHARGING PILES



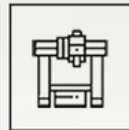
POS MACHINES



SMART HOME
APPLIANCES



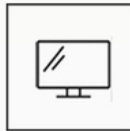
MEDICAL
EQUIPMENT



GAS DETECTORS



PRINTER



BEAUTY EQUIPMENT



GAME



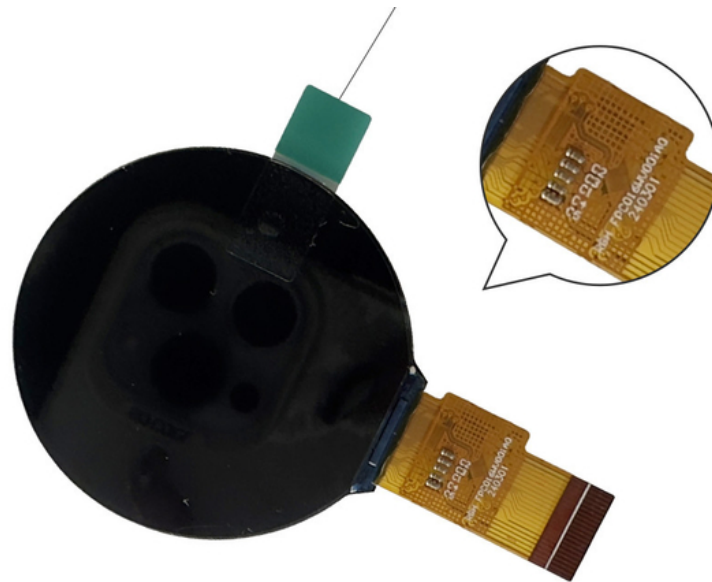
SMART
WEARABLES



FACIAL
RECOGNITION DEVICES



MANAGE HANDHELD
TERMINALS



FAQ

1: What are the payment terms?

A: We usually accept T/T, Paypal, other terms to be negotiated.

2: What's the lead time?

A: Usually 3~5 days for sample orders if goods are in stock, and 3~5 weeks for mass production (basing on the quantity and product).

3: Do you support custom logo on the LCM?

A: Yes, we support, pls send us your detail inquiry, our sales will contact you asap.

4: How can I place a sample order?

A: Pls send us your inquiry, our sales will contact you soon.

5: What size LCD display can you provide?

A: 0.96 inch to 21.5 inch TFT LCD display we can provide.

6: What's your MOQ?

A: Most of our product's MOQ is 1K, beacuse we are a LCD display manufacturer.

7. What shipping ways do you support?

A: We can consult with it.



Rongguang Hui Optoelectronics Science and Technology



+8613924639701



allan@rgh-display.com



displaytftlcd.com

Meilan Business Center 2001, at the intersection of Xixiang Avenue and Qianjin 2nd Road , Xixiang Street ,
Bao'an District , Shenzhen City