



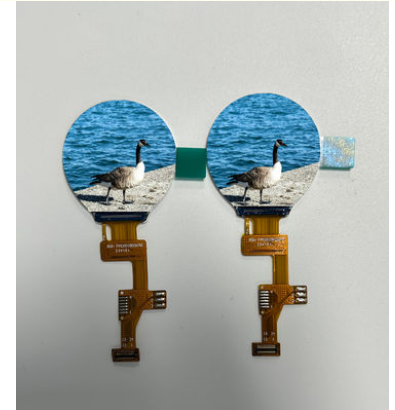
## 1.09 Inch IPS TFT 400cd/M2 Lumination GC9A01 driver IC Circular Lcd Display

### Our Product Introduction

for more products please visit us on [displaytftlcd.com](http://displaytftlcd.com)

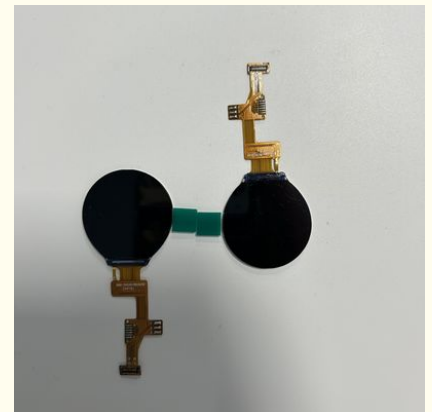
#### Basic Information

- Place of Origin: Shenzhen, China
- Brand Name: RGH
- Certification: ISO9001/ISO14001
- Model Number: RT109006A
- Minimum Order Quantity: 3pcs
- Price: Negotiable
- Packaging Details: Standard Exportation Package
- Delivery Time: 3-5 weeks
- Payment Terms: L/C, T/T, Paypal
- Supply Ability: 3.5kk

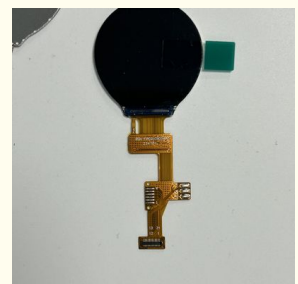
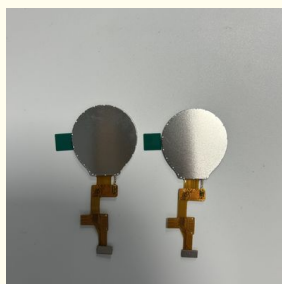
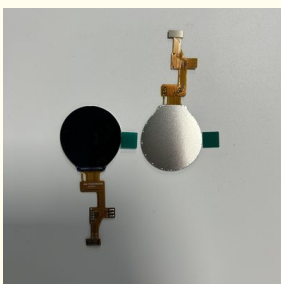


#### Product Specification

- Size: 1.09 inch
- Resolution: 240 RGB X240
- LCD Type: Transmissive TFT
- Viewing Direction: ALL O'clock
- LCM Outline Dimension: 34.7(H) X 35 (V) X 3.6(T) Mm
- Active Area: 27.79(H) X 27.79(V) Mm
- Backlight Type: LED
- Operating Temperature: -20 ~70
- Storage Temperature: -30 ~80
- Driving IC: GC9A01
- Brightness: 400cd/m2
- Color: 262k



#### More Images



Product Description

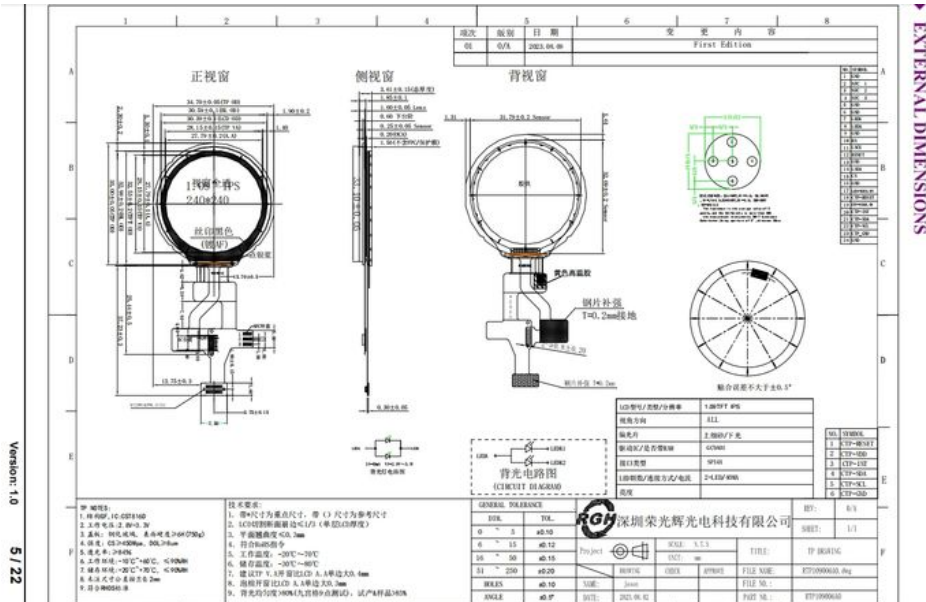
Product Specification

Size	1.09inch
Resolution	240(RGB)X240
Backlight Type	LED
LCD Type	Transmissive TFT
Driving IC	GC9A01
Brightness	400cd/m2
Operating temperature	-20 ~70
Active Area	27.79(H) X27.79(V)mm

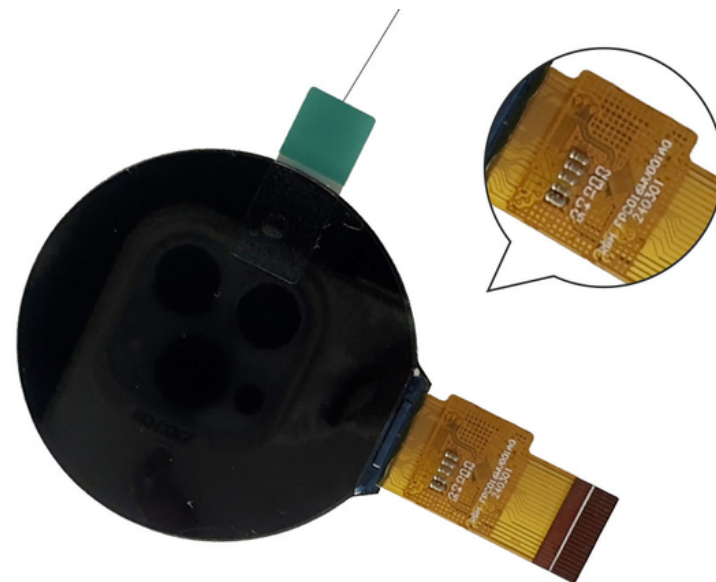
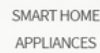
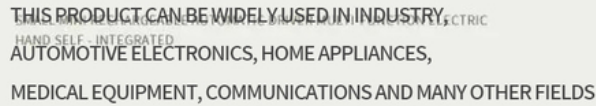
Interface Pin Definition

NO.	Symbol	Level	Function
1	GND		Ground.
2	NFC1		
3	NFC2		
4	NFC3		
5-6	GND		Ground.
7	LEDK		LED,cathode.
8	LEDA		LED,anode.
9	GND		Ground.
10	WRIA0		command selection pin in 4-line serial interface
11	SCL		This pin is used to be serial interface clock
12	RESET		Reset signal.
13	GND		Ground.
14	SDA		SPI interface input/output pin.
15	CS		-Chip selection pin
16	GND		Ground.
17	VDD	2.8V(typ)	Power supply.
18	TP-RESET		TP RESET PIN
19	TP-VCC		Power setting
20	TP-INT		TP INT
21	TP-SDA		TP SDA
22	TP-SCL		TP SCL
23	TP-GND		Ground.
24	GND		Ground.

External Dimensions



×



6. What's your MOQ?

A: Most of our product's MOQ is 1K, beacuse we are a LCD display manufacturer.

7. What shipping ways do you support?

A: We can consult with it.



**Rongguang Hui Optoelectronics Science and Technology**



+8613924639701



allan@rgh-display.com



displaytftlcd.com

Meilan Business Center 2001, at the intersection of Xixiang Avenue and Qianjin 2nd Road , Xixiang Street ,  
Bao'an District , Shenzhen City