



1.09" Inch 240×240 TFT LCD Display Module With 350cd/M2 Brightness

Our Product Introduction

for more products please visit us on displaytftlcd.com

Basic Information

- Place of Origin: Shenzhen, China
- Brand Name: RGH
- Certification: ISO9001/ISO14001
- Model Number: RT109007A
- Minimum Order Quantity: 3pcs
- Price: Negotiable
- Packaging Details: Standard Exportation Package
- Delivery Time: 3-5 weeks
- Payment Terms: L/C, T/T, Paypal
- Supply Ability: 3.5kk



Product Specification

- Size: 1.09 inch
- Resolution: 240 RGB X240
- LCD Type: Transmissive TFT
- Viewing Direction: ALL O'clock
- LCM Outline Dimension: 30.59 (H) X32.98(V) X1.56(T) Mm
- Active Area: 27.79(H) X27.79 (V)
- Backlight Type: LED
- Operating Temperature: -10 ~60
- Storage Temperature: -20 ~70
- Driving IC: GC9A01
- Response Time: 30ms
- Contrast Ratio: 1000:1
- Brightness: 350cd/m2
- Colour: 262k



More Images



Product Description

Product Specification

Size	1.09inch
Resolution	240(RGB)X240
Backlight Type	LED
LCD Type	Transmissive TFT
Driving IC	GC9A01
Brightness	350cd/m2
Contrast ratio	1000:1
Active Area	27.79(H) X27.79 (V)

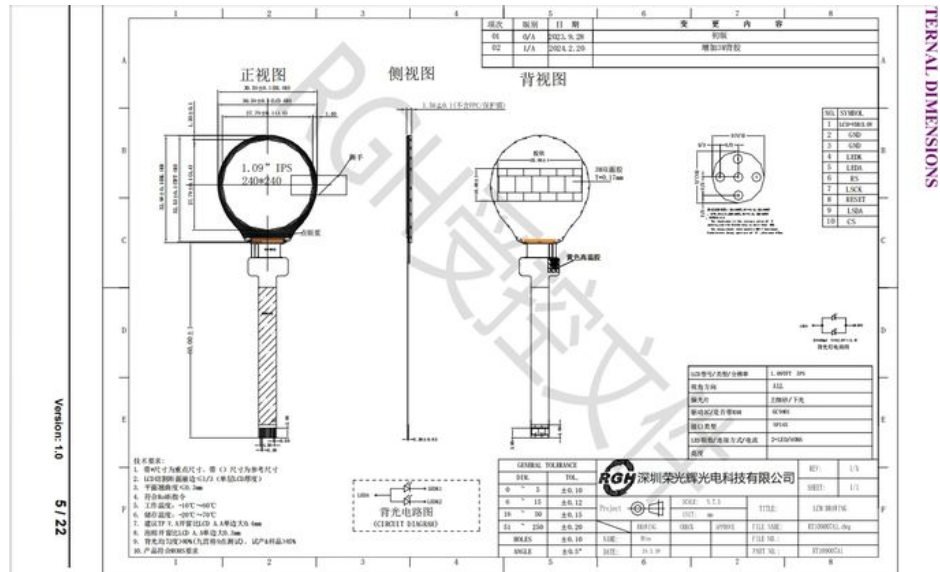
About this item

This 1.09-inch IPS TFT LCD module offers a vivid and compact display solution for modern electronic devices. With a **240(RGB) x 240** pixel resolution, it ensures sharp and colorful image rendering in a small footprint. Featuring **LED backlighting** and a **transmissive TFT panel**, the display delivers enhanced brightness at **350 cd/m²** and a **1000:1 contrast ratio**, making it suitable for both indoor and outdoor viewing conditions. Powered by the **GC9A01 driver IC**, the module provides reliable performance and seamless integration with a wide range of microcontroller platforms. Its **active area of 27.79mm (H) x 27.79mm (V)** makes it ideal for wearable devices, compact instruments, smart home controllers, and industrial interfaces where space is limited but clarity is critical.

Interface Pin Definition

NO.	Symbol	Level	Function
1	LCD-VDD	3.0V	Power supply.
2-3	GND		Ground
4	LEDK		LED,cathode.
5	LEDA		LED,anode.
6	RS		command selection pin in 4-line serial interface
7	LSCK		This pin is used to be serial interface clock
8	RESET		Reset signal.
9	LSDA		SPI interface input/output pin.
10	CS		-Chip selection pin

External Dimensions



IT IS USED IN A VARIETY OF FIELDS

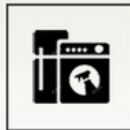


REGISTERED DESIGN
TRADE MARK OF SHENZHEN
DONGFANG ELECTRONIC CO., LTD.

THIS PRODUCT CAN BE WIDELY USED IN INDUSTRY, ELECTRIC
HAND SELF-INTEGRATED
AUTOMOTIVE ELECTRONICS, HOME APPLIANCES,
MEDICAL EQUIPMENT, COMMUNICATIONS AND MANY OTHER FIELDS



CAR NAVIGATION



CHARGING PILES



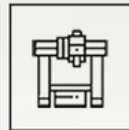
POS MACHINES



SMART HOME
APPLIANCES



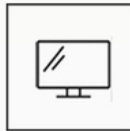
MEDICAL
EQUIPMENT



GAS DETECTORS



PRINTER



BEAUTY EQUIPMENT



GAME



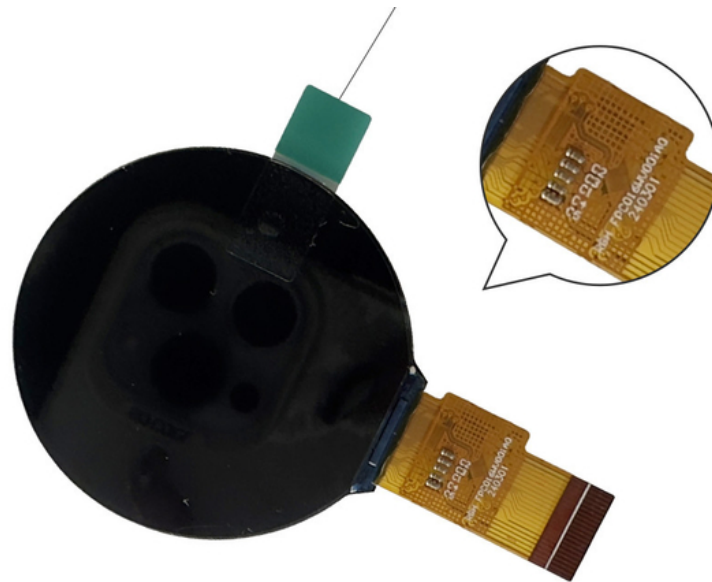
SMART
WEARABLES



FACIAL
RECOGNITION DEVICES



MANAGE HANDHELD
TERMINALS



FAQ

1: What are the payment terms?

A: We usually accept T/T, Paypal, other terms to be negotiated.

2: What's the lead time?

A: Usually 3~5 days for sample orders if goods are in stock, and 3~5 weeks for mass production (basing on the quantity and product).

3: Do you support custom logo on the LCM?

A: Yes, we support, pls send us your detail inquiry, our sales will contact you asap.

4: How can I place a sample order?

A: Pls send us your inquiry, our sales will contact you soon.

5: What size LCD display can you provide?

A: 0.96 inch to 21.5 inch TFT LCD display we can provide.

6: What's your MOQ?

A: Most of our product's MOQ is 1K, beacuse we are a LCD display manufacturer.

7. What shipping ways do you support?

A: We can consult with it.



Rongguang Hui Optoelectronics Science and Technology



+8613924639701



allan@rgh-display.com



displaytftlcd.com

Meilan Business Center 2001, at the intersection of Xixiang Avenue and Qianjin 2nd Road , Xixiang Street ,
Bao'an District , Shenzhen City