



Amoled 6.39 Inch Display 1080*2340 Resolution With MIPI Interface

Our Product Introduction

Basic Information

- Place of Origin: Shenzhen, China
- Brand Name: RGH
- Certification: ISO9001/ISO14001
- Model Number: RTO639001A
- Minimum Order Quantity: 3pics
- Price: Negotiable
- Packaging Details: Standard package
- Delivery Time: 3-5weeks
- Payment Terms: L/C, T/T,Paypal
- Supply Ability: 3.5kk



Product Specification

- Screen Size (inch): 6.39 Inch
- Display Mode: AMOLED
- Display Method: Active Matrix TFT
- Resolution(dot): 1080(W)x2340(H)
- Active Area(mm): 68.04(W)x147.42(H)
- Pixel Pitch (um): 63 (W)×63(H)
- Technology Type: LTPS
- Color Depth: 16.7M
- Interface: MIPI 4 LANE
- With TP/Without TP: With TP
- Driver IC(Type): SD5207
- Touch IC(Type): FT3519
- Frame Rate: 60HZ

for more products please visit us on displaytftlcd.com

Product Description

Size	6.39 inch
Display Mode	AMOLED
Resolution	1080(W)x2340(H)
Technology Type	LTPS
Interface	MIPI 4 LANE
Driver IC(Type)	SD5207
Touch IC(Type)	FT3519
Frame Rate	60HZ

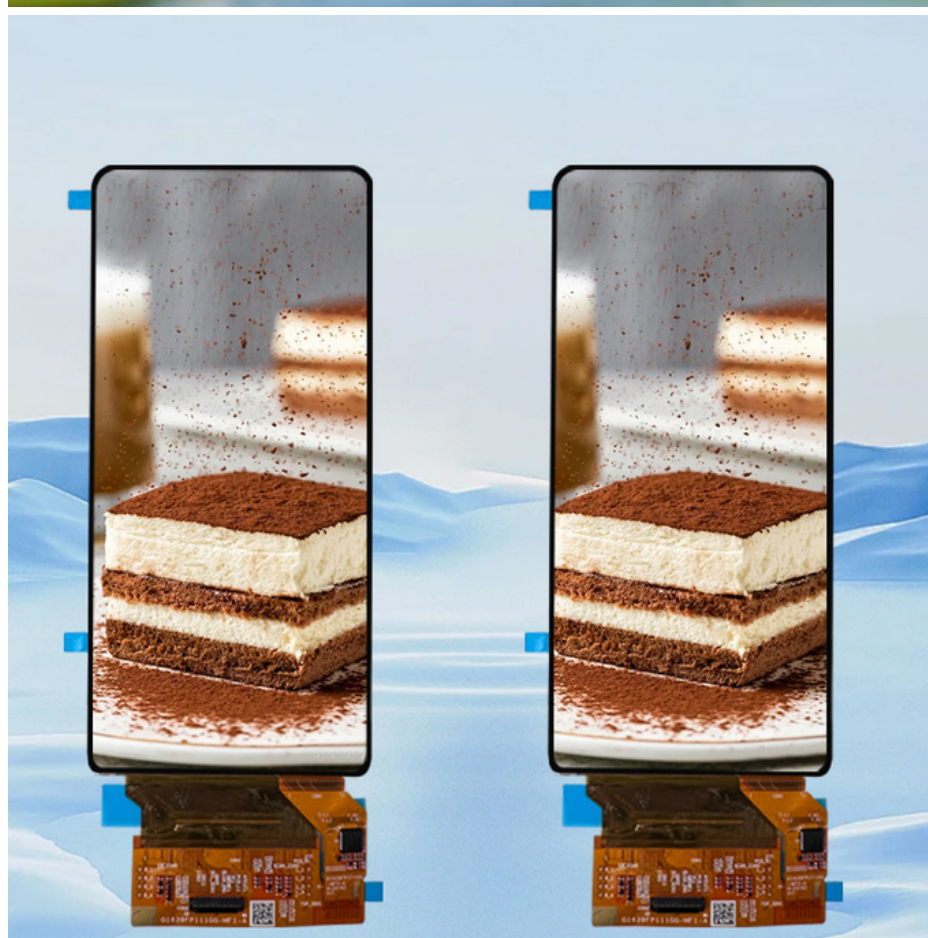
This advanced 6.39-inch AMOLED display module combines high-resolution visuals with cutting-edge touch technology, offering a premium solution for modern smart devices and display-intensive applications. Featuring a resolution of 1080(W) × 2340(H) pixels and an LTPS (Low-Temperature Polycrystalline Silicon) Active Matrix TFT structure, the panel delivers stunning image clarity, vibrant colors, and excellent power efficiency.

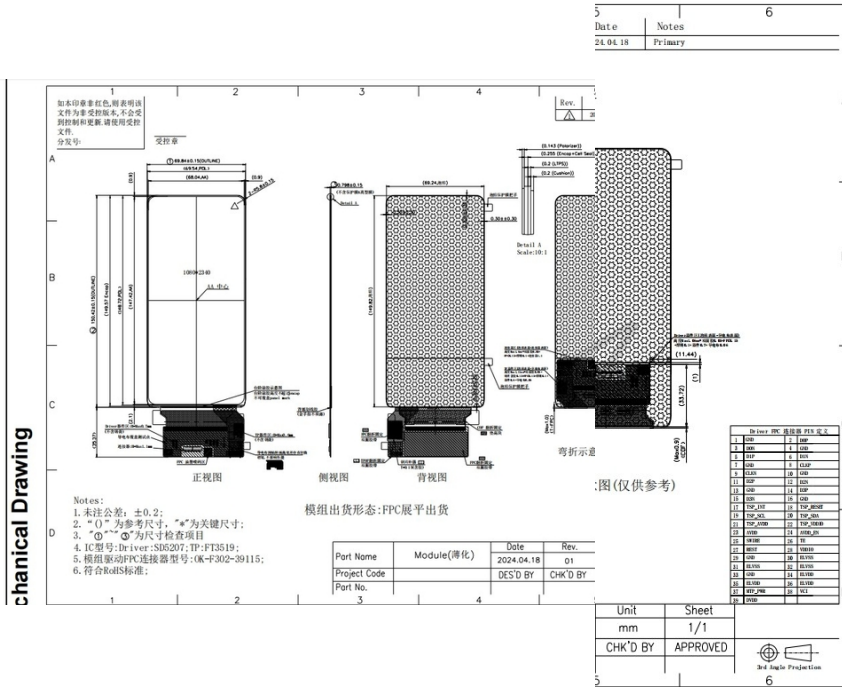
With an active area of 68.04(W) × 147.42(H) mm and a fine pixel pitch of 63 × 63 μm, this display offers rich detail and smooth gradients, supporting a 16.7M color depth for lifelike images. The integrated MIPI 4-lane interface ensures high-speed data transmission, enabling seamless performance at a refresh rate of 60Hz.

Equipped with a responsive capacitive touch panel (With TP), this module incorporates the FT3519 touch controller and SD5207 display driver IC, enabling accurate and fluid user interactions. The combination of AMOLED technology and LTPS substrate results in enhanced brightness, wider color gamut, and lower power consumption—ideal for high-end smartphones, portable displays, and smart control interfaces.

Whether for consumer electronics or industrial-grade smart devices, this display delivers premium performance in a sleek, modern format.







1	GND	Ground
2	D0P	MIPI Data Line
3	D0N	MIPI Data Line
4	GND	Ground
5	D1P	MIPI Data Line
6	D1N	MIPI Data Line
7	GND	Ground
8	CLKP	MIPI CLK Line
9	CLKN	MIPI CLK Line
10	GND	Ground
11	D2P	MIPI Data Line
12	D2N	MIPI Data Line
13	GND	Ground
14	D3P	MIPI Data Line
15	D3N	MIPI Data Line
16	GND	Ground
17	TSP_INT	Interrupt Signal for Touch Panel
18	TSP_RESET	Reset Pin for Touch Panel
19	TSP_SCL	Serial Clock Signal for Touch Panel I2C I/F
20	TSP_SDA	Serial Data Signal for Touch Panel I2C I/F
21	TSP_AVDD	Analog Power for Touch Panel
22	TSP_VDDIO	Digital Power for Touch Panel
23	AVDD	AMOLED charge pumping power for DDIC
24	AVDD_EN	AVDD enable
25	SWIRE	Control the PMIC
26	TE	Tear Effect
27	REST	Drive IC reset
28	VDDIO	AMOLED logic power for DDIC
29	GND	Ground (or NA)
30	ELVSS	AMOLED EL Negative power

31	ELVSS	
32	ELVSS	
33	GND	Ground (or NA)
34	ELVDD	AMOLED EL Positive power
35	ELVDD	
36	ELVDD	
37	MTP_PWR	Power supply for MTP Programming or Erase
38	VCI	AMOLED logic power for DDIC
39	DVDD	AMOLED logic power for DDIC



Rongguang Hui Optoelectronics Science and Technology



+8613924639701



allan@rgh-display.com



displaytftlcd.com

Meilan Business Center 2001, at the intersection of Xixiang Avenue and Qianjin 2nd Road , Xixiang Street ,
Bao'an District , Shenzhen City