



## E Ink Display Electronic Label Paper 3.52 Inch Flexible AM EPD

### Our Product Introduction

for more products please visit us on [displaytftlcd.com](http://displaytftlcd.com)

#### Basic Information

- Place of Origin: Shenzhen, China
- Brand Name: RGH
- Certification: ISO9001/ISO14001
- Model Number: SE0352N01-A0
- Minimum Order Quantity: 3PCS
- Price: Negotiable
- Packaging Details: Standard Exportation Package
- Delivery Time: 3-5 weeks
- Payment Terms: L/C, T/T, Paypal
- Supply Ability: 3.5kk



#### Product Specification

- Screen Size: 3.52 Inch
- Resolution: 240\*360 Pixels
- Pixel Pitch: TBD Mm
- Interface Type: SPI Interface
- Active Area: 49.67\*74.51 Mm
- Outline Dimension: 54.41\*84.70\*1.14 Mm
- Weight: TBD
- Highlight: **Electronic Label e ink display touch, AM EPD e ink display touch, 3.52 Inch flexible e ink display**



#### More Images



## Product Description

### 1. General Description

SE0352N01 is an Active Matrix Electrophoretic Display(AM EPD), with interface and a reference system design. The display is capable to display images at 1-bit white and black full display capabilities. The 3.52" active area contains 240x360 pixels. The module is a TFT-array driving electrophoretic display, with integrated circuits including gate buffer, source buffer, MCU interface, timing control logic, oscillator, DC-DC, SRAM, LUT, VCOM. Module can be used in portable electronic devices, such as Electronic Shelf Label (ESL) System.

### 2. Features

- 240×360 pixels display
- White reflectance above 30%
- Contrast ratio above 8:1
- Ultra wide viewing angle
- Ultra low power consumption
- Pure reflective mode
- Bi-stable display
- Commercial temperature range
- Landscape, portrait modes
- Hard-coat antiglare display surface
- Ultra Low current deep sleep mode
- On chip display RAM
- Waveform can stored in On-chip OTP or written by MCU
- Serial peripheral interface available
- On-chip oscillator
- On-chip booster and regulator control for generating VCOM, Gate and Source driving voltage
- Built-in temperature sensor

### 3. Application

Electronic Shelf Label System

# E-ink Epaper display

Clear, white "paper" black letters

Support processing customization

The requirements for ambient light are very low, whether it is sunny or bright  
At the beginning, it can provide you with a comfortable viewing experience like paper.  
The viewing angle is wide and easy to read.



Ultra-wide  
viewing angles



Ultra-high  
contrast



# Reasons to choose us

The factory supply price is low  
and the after-sales service is worry-free

...



**Fast shipping**



**Online customer  
service**



**Large quantity and  
excellent price**



**Processing  
customization**



**Good  
quality**



**Worry-free  
after-sales**

# GOLDFINGERSARE GOLD-PLATED

...

Resistant to salt spray corrosion, high and low temperature



# It is used in a variety of fields

...

This product can be widely used in industry,  
automotive electronics, home appliances,  
Medical equipment, communications and many other fields



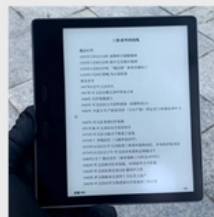
Clocks



electronic work badges



electronic doorplates



electronic paper  
readers



watches



electronic calendars



price tags



electronic thermometers

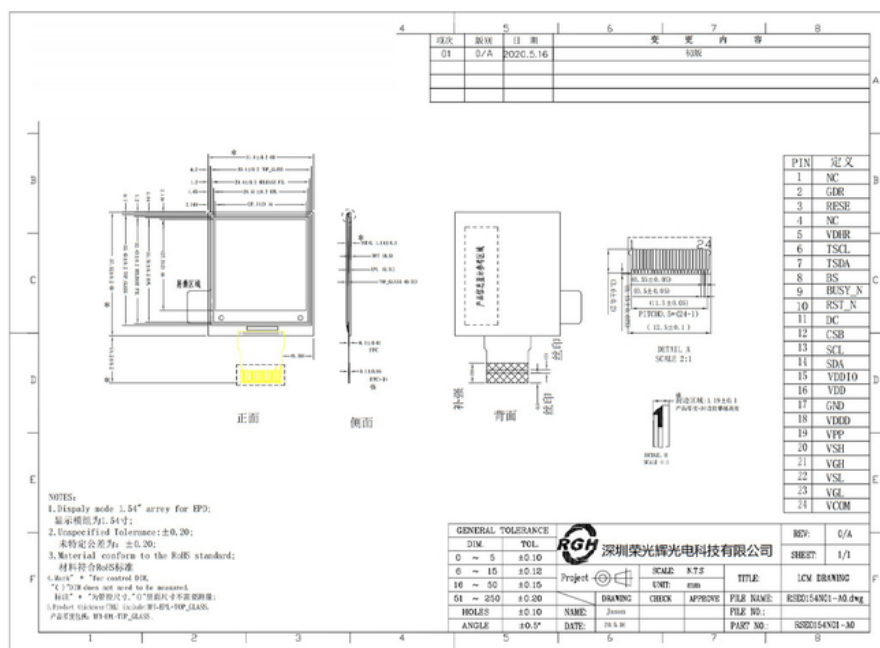
No.	Name	I/O	Description	Remark
1	NC		Do not connect with other NC pins	
2	GDR	0	N-Channel MOSFET Gate Drive Control	
3	RESE	I	Current Sense Input for the Control Loop	
4	NC		Do not connect with other NC pins	
5	VDHR	C	Positive source driver voltage for Source	
6	TSCL	0	IC Interface to digital temperature sensor Clock pin	
7	TSDA	I/O	F <sup>2</sup> C Interface to digital temperature sensor Data pin	
8	BS	I	Bus Interface selection pin	Note 5-4
9	BUSY N	0	Busy state output pin	Note 5-3
10	RST N	I	Reset signal input.Active Low.	
11	DC	I	Data /Command control pin	Note 5-2
12	CSB	I	Chip select input pin	Note 5-1



13	SCL	I	Serial Clock pin (SPI)	
14	SDA	I	Serial Data pin(SPD)	
15	VDDIO	P	Power Supply for interface logic pins.It should be connected with VDD	
16	VDD	P	Power Supply for the chip	
17	GND	P	Ground	
18	VDDD	C	Core logic power pin VDD can be regulatedinternally from VCI.A capacitor should be connected between VDD and VSS under all circumstances	
19	VPP	P	Power Supply for OTP Programming	
20	VSH	C	Positive Source driving voltage	
21	VGH	C	Positive Gate driving voltage	
22	VSL	C	Negative Source driving voltage	
23	VGL	C	Negative Gate driving voltage	
24	VCOM	C	VCOM driving voltage	

## EXTERNAL DIMENSIONS

...



# Certificate display

...





# Rongguanghui Optoelectronics

Ingenuity spirit: work hard

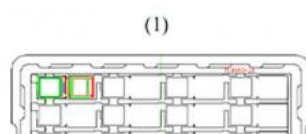
Focus so we are more professional

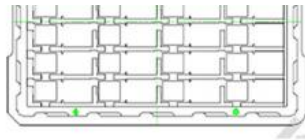


## PACKING METHOD

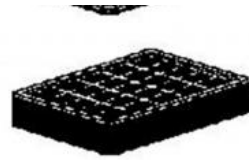


- (1). Put module into tray cavity :
- (2). Tray stacking
- (3). Put 1 cardboard under the tray stack and 1 cardboard above:
- (4). Fix the cardboard to the tray stack with adhesive tape:
- (5). Put the tray stack and 4 pcs desiccant into the LDPE bag
- (6). Fix the LDPE bag with adhesive tape:
- (7). Put LDPE bag with tray stack into carton.:
- (8). Carton sealing with adhesive tape.

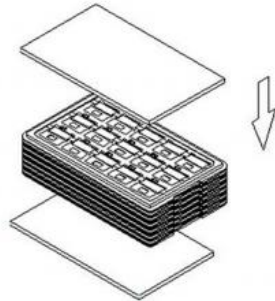




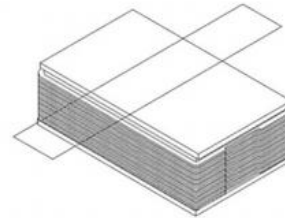
(3)



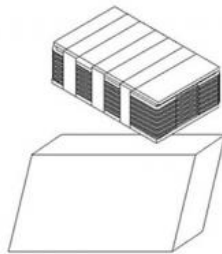
(4)



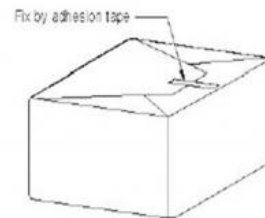
(5)



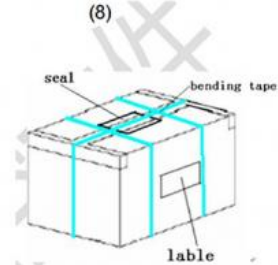
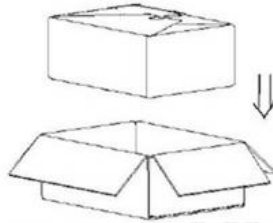
(6)



(7)



(8)



**Rongguang Hui Optoelectronics Science and Technology**



+8613924639701



allan@rgh-display.com



displaytftlcd.com

Meilan Business Center 2001, at the intersection of Xixiang Avenue and Qianjin 2nd Road , Xixiang Street ,  
Bao'an District , Shenzhen City