

0.96 Inch IPS TFT LCD Display Module 80x160 For Blood Oxygen Equipment

Our Product Introduction

Basic Information

- Place of Origin: Shenzhen, China
- Brand Name: RGH
- Certification: ISO9001/ISO14001
- Model Number: RT096019D
- Minimum Order Quantity: 3PICS
- Price: Negotiable
- Packaging Details: Standard Exportation Package
- Delivery Time: 3-5 weeks
- Payment Terms: L/C, T/T, Paypal
- Supply Ability: 3.5kk

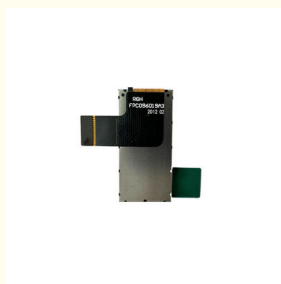


Product Specification

- Display Size: 0.96 inch
- Resolution: 80*160
- Operating Temperature: -20°C To 70°C
- Display Type: TFT LCD
- Touchscreen: NO
- Backlight Type: LED
- Display Interface: SPI
- Viewing Angle: ALL O'CLOCK
- Highlight: 0.96 Inch IPS TFT LCD Display ,
80x160 IPS TFT LCD Display ,
80x160 module tft lcd



More Images



Product Description

The 3.17-inch Thin Film Transistor Liquid Crystal Display (TFT LCD) offers exceptional clarity and performance in a compact form factor. With a high resolution of 1024×768 pixels and a brightness level of 600 cd/m², this display delivers sharp, vibrant visuals suitable for high-detail applications. The module is illuminated by an efficient LED backlight and supports MIPI interface connectivity for fast data transmission and seamless integration into modern electronic systems.

Measuring just 69.60(H) × 55.5(V) × 2.10(T) mm, this display is optimized for space-constrained environments while maintaining a power consumption of only 25 watts. Ideal for portable devices, industrial equipment, and advanced instrumentation, the 3.17-inch TFT LCD combines compactness with high-performance display technology.



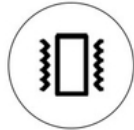
HIGH TEMPERATURE
AND HUMIDITY



ELECTROSTATICS
ESD



CORROSION-RESISTANT



ANTI-VIBRATION



SALT SPRAY TEST



AGING AT HIGH
TEMPERATURES

GOOD DRIVER COMPATIBILITY VARIOUS INTERFACES ARE SUPPORTED

II.



SUPPORT MULTIPLE
INTERFACES



CUSTOMIZED
INTERFACE



CABLE

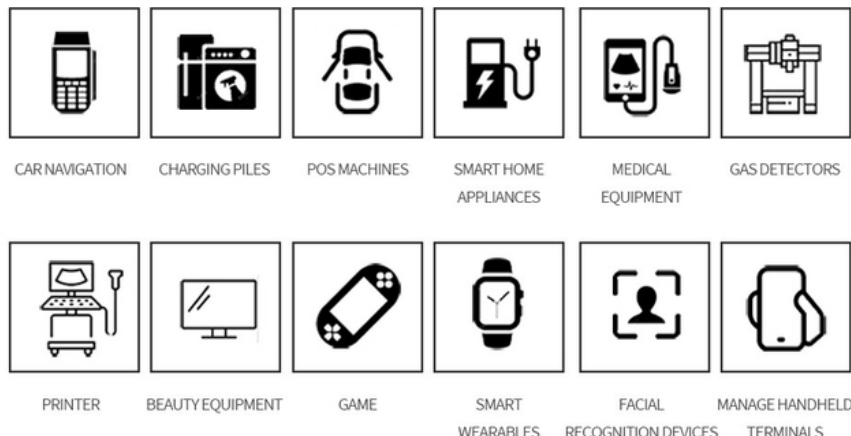


TP

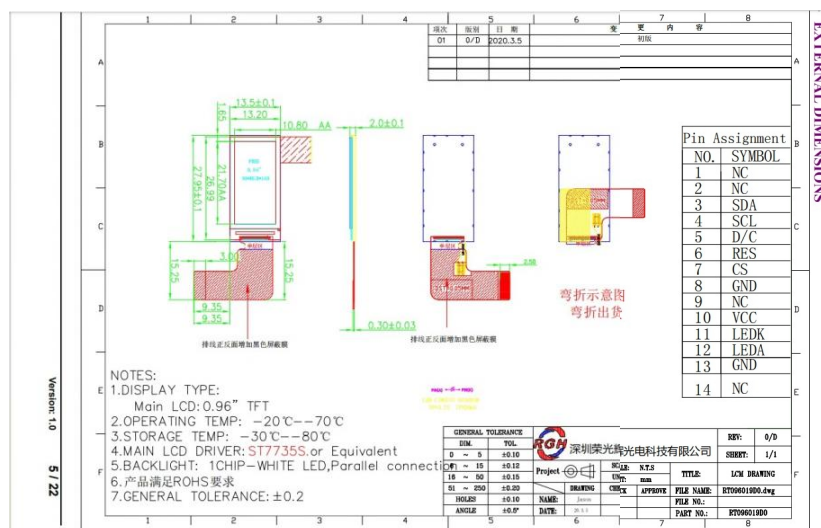
IT IS USED IN A VARIETY OF FIELDS

DIVERSE NEEDS · MULTIPLE FIELDS · I AM ENOUGH

THIS PRODUCT CAN BE WIDELY USED IN INDUSTRY,
AUTOMOTIVE ELECTRONICS, HOME APPLIANCES,
MEDICAL EQUIPMENT, COMMUNICATIONS AND MANY OTHER FIELDS



NO.	Symbol	Level	Function
1	NC		NO
2	NC		NO
3	SDA		SPI interface input/output pin The data is latched on the rising edge of the SCL signal.
4	SCL		This pin is used to be serial interface clock.
5	D/C		Disoklay data/command selection pin in 4-line serial interface.
6	RESET		his signal will reset the device and it must be applied to properly initialize the chip selection pin:Low enable,low.
7	CS		Chip sdlection pin Low enable High disable.
8	GND		Ground
9	NC		NO
10	VCC		Power supply for Analog VCC=2.5V-3.3V
11	LEDK		LED Cathode
12	LEDA		LED anode
13	GND		Ground
14	NC		NO

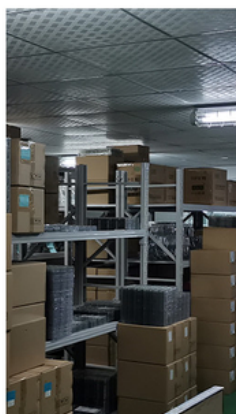


RONGHUI OPTOELECTRONICS

INGENUITY SPIRIT: WORK HARD



FOCUS SO WE ARE MORE PROFESSIONAL



FACTORY DIRECT SUPPLY

THE PRINCIPLE OF
SIMPLICITY AND PRACTICALITY

INGENUITY

TREAT IT WITH CARE
PER PRODUCT



PERFECT SERVICE

PROVIDE PROFESSIONAL
SERVICES TO CUSTOMERS

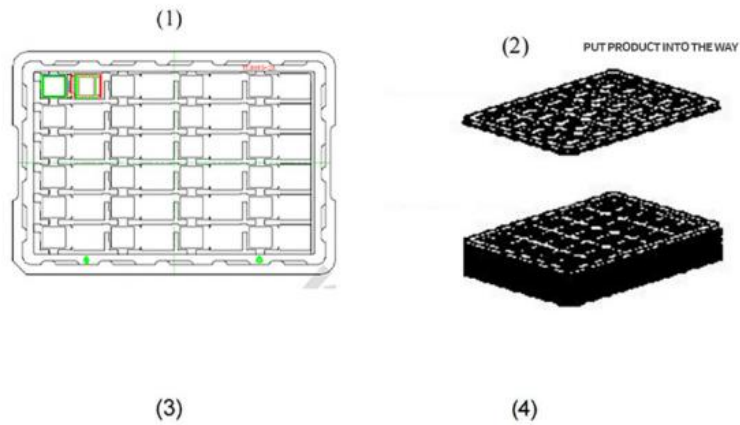
CERTIFICATE DISPLAY

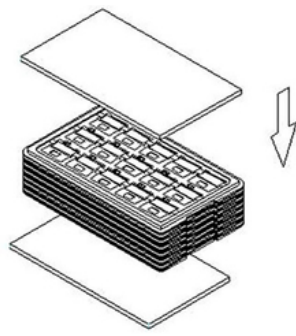


PACKING METHOD

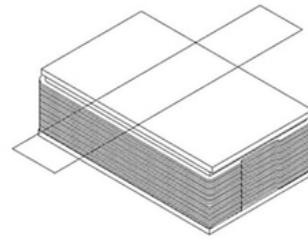


- (1). Put module into tray cavity :
- (2). Tray stacking
- (3). Put 1 cardboard under the tray stack and 1 cardboard above:
- (4). Fix the cardboard to the tray stack with adhesive tape:
- (5). Put the tray stack and 4 pcs desiccant into the LDPE bag
- (6). Fix the LDPE bag with adhesive tape:
- (7). Put LDPE bag with tray stack into carton.:
- (8). Carton sealing with adhesive tape.

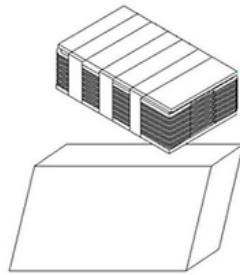




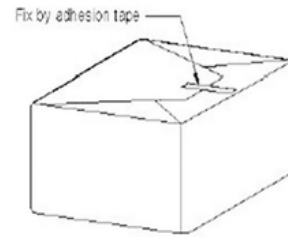
(5)



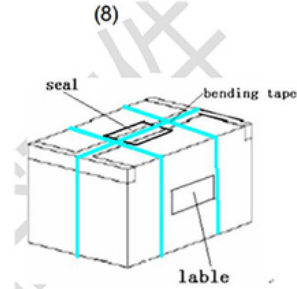
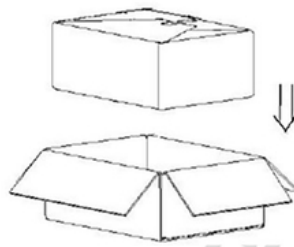
(6)



(7)



(8)



FAQ

1: What are the payment terms?

A: We usually accept T/T, Paypal, other terms to be negotiated.

2: What's the lead time?

A: Usually 3~5 days for sample orders if goods are in stock, and 3~5 weeks for mass production (basing on the quantity and product).

3. Do you support custom logo on the LCM?

A: Yes, we support, pls send us your detail inquiry, our sales will contact you asap.

4. How can I place a sample order?

A: Pls send us your inquiry, our sales will contact you soon.

5. What size LCD display can you provide?

A: 0.96 inch to 21.5 inch TFT LCD display we can provide.

7. What's your MOQ?

A: Most of our product's MOQ is 1K, beacuse we are a LCD display manufacturer.

8. What shipping ways do you support?

A: We can consult with it.



Rongguang Hui Optoelectronics Science and Technology



+8613924639701



allan@rgh-display.com



displaytftlcd.com

Meilan Business Center 2001, at the intersection of Xixiang Avenue and Qianjin 2nd Road , Xixiang Street ,

