



## TFT LCD Display 1.5 Inch RGB 8BIT With Smart Drone Color Screen

### Our Product Introduction

for more products please visit us on [displaytftlcd.com](http://displaytftlcd.com)

#### Basic Information

- Place of Origin: Shenzhen, China
- Brand Name: RGH
- Certification: ISO9001/ISO14001
- Model Number: RT15WH010J
- Minimum Order Quantity: 3PCS
- Price: Negotiable
- Packaging Details: Standard Exportation Package
- Delivery Time: 3-5 weeks
- Payment Terms: L/C, T/T, Paypal
- Supply Ability: 3.5kk



#### Product Specification

- Screen Size: 1.5 Inch
- Resolution: 480\*240
- Dimensions: 37.10(W)\*32.7(H)\*2.50
- Interface: RGB 8BIT
- Backlight Type: LED
- Viewing Angle: 6 O'CLOCK
- Display Technology: Thin Film Transistor (TFT)
- Brightness: 160cd/m<sup>2</sup>
- Highlight: Smart Drone TFT LCD Display, RGB 8BIT TFT LCD Display, 1.5inch tft lcd touch screen display



#### More Images



## Product Description

TFT LCD Display 1.5 Inch RGB 8BIT With Smart Drone Color Screen

Size	1.5 inch
Resolution	480*240
Dimensions	37.10(W)*32.7(H)*2.50
Interface	RGB 8BIT
Backlight	LED
Viewing Angle	6 O'CLOCK
Display model number	RT15WH010J
Brightness	160cd/m <sup>2</sup>



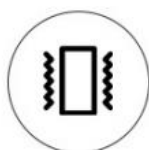
HIGH TEMPERATURE  
AND HUMIDITY



ELECTROSTATICS  
ESD



CORROSION-RESISTANT



ANTI-VIBRATION



SALT SPRAY TEST



AGING AT HIGH  
TEMPERATURES

Item	Specification
Size	1.5 inch
Display mode	Transmissive TFT
Part NO.	RT15WH010J
Resolution	480*240
Outline size	37.10 (W) X32.70(H) X2.50 mm
Active area	29.76(W) X22.32 (H) mm
View direction	6 o'clock
Piexl pitch	480(RGB)X 240
Interface	RGB 8BIT
Backlight	2LEDs
Surface luminance	160cd/m2
Logic voltage	2.5v-3.3v
Operating temperature	-10 ~60
Storage temperature	-20 ~70

Generated by Foxit PDF Creator © Foxit Software  
<http://www.foxitsoftware.com> For evaluation only.

#### ◆ INTERFACE PIN CONNECTIONS

NO.	Symbol	Level	Function
1-6	CP3-8		
7-8	DUMMY		
9	PC0		
10	VCOML		No connection.
11	VCOMH		No connection.
12	AGND	VSS	Ground.
13	DUMMY		
14	AVDD		
15-16	CP1-2		
17	PWM		
18	FB		
19	LED-		LED, cathode.
20-21	DUMMY		
22	LED+		LED, cathode.
23	GND	VSS	Ground.
24	VCC		
25	VSNC	H/L	Frame synchronizing signal for RGB.
26	HSNC	H/L	Line synchronizing signal for RGB.
27	DCLK	H/L	Dot clock signal for RGB.
28-35	DIN0-7	H/L	Data bus.
36	SDA		
37	SCL		
38	SCEN		
39	SHDB		
40	CREST		

# IT IS USED IN A VARIETY OF FIELDS

DIVERSE NEEDS · MULTIPLE FIELDS · I AM ENOUGH

THIS PRODUCT CAN BE WIDELY USED IN INDUSTRY,  
AUTOMOTIVE ELECTRONICS, HOME APPLIANCES,  
MEDICAL EQUIPMENT, COMMUNICATIONS AND MANY OTHER FIELDS



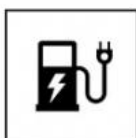
CAR NAVIGATION



CHARGING PILES



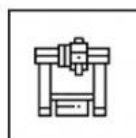
POS MACHINES



SMART HOME  
APPLIANCES



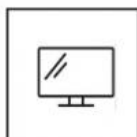
MEDICAL  
EQUIPMENT



GAS DETECTORS



PRINTER



BEAUTY EQUIPMENT



GAME



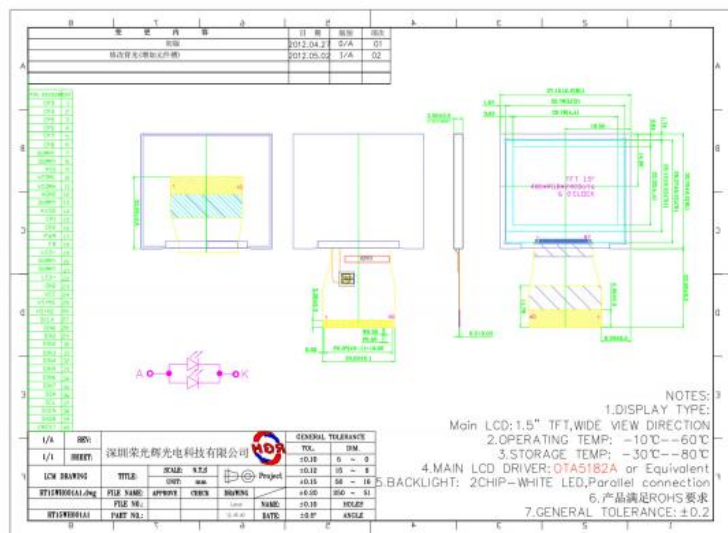
SMART  
WEARABLES



FACIAL  
RECOGNITION DEVICES



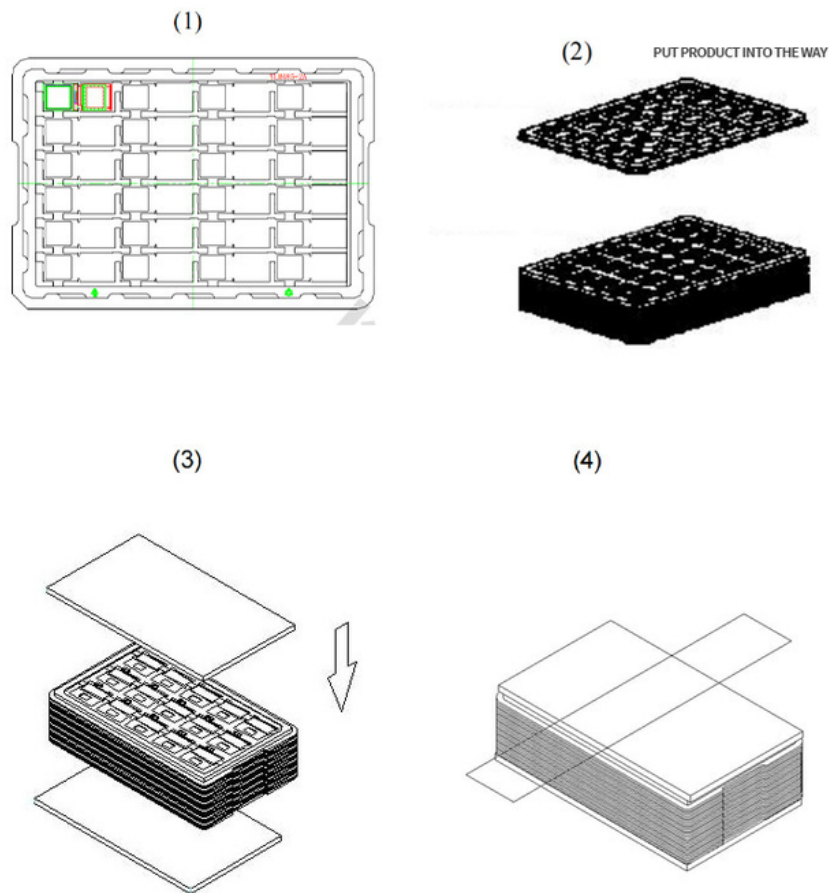
MANAGE HANDHELD  
TERMINALS



## PACKING METHOD



- (1). Put module into tray cavity :
- (2). Tray stacking
- (3). Put 1 cardboard under the tray stack and 1 cardboard above:
- (4). Fix the cardboard to the tray stack with adhesive tape:
- (5). Put the tray stack and 4 pcs desiccant into the LDPE bag
- (6). Fix the LDPE bag with adhesive tape:
- (7). Put LDPE bag with tray stack into carton.:
- (8). Carton sealing with adhesive tape.



### FAQ

1: What are the payment terms?

A: We usually accept T/T, Paypal, other terms to be negotiated.

2: What's the lead time?

A: Usually 3~5 days for sample orders if goods are in stock, and 3~5 weeks for mass production (basing on the quantity and product).

3. Do you support custom logo on the LCM?

A: Yes, we support, pls send us your detail inquiry, our sales will contact you asap.

4. How can I place a sample order?

A: Pls send us your inquiry, our sales will contact you soon.

5. What size LCD display can you provide?

A: 0.96 inch to 21.5 inch TFT LCD display we can provide.

7. What's your MOQ?

A: Most of our product's MOQ is 1K, beacuse we are a LCD display manufacturer.

8. What shipping ways do you support?

A: We can consult with it.



**Rongguang Hui Optoelectronics Science and Technology**



+8613924639701



allan@rgh-display.com



displaytftlcd.com

Meilan Business Center 2001, at the intersection of Xixiang Avenue and Qianjin 2nd Road , Xixiang Street ,  
Bao'an District , Shenzhen City